

2018



*Construction of a new wing at the Gingerland Secondary School*

# STATISTICAL DIGEST



*Drilling of the Geothermal Well - Hamilton*



*Nevis Mango Festival*

## **Past trends and Present position up to 2017**

*Department of Statistics  
Ministry of Finance, Nevis Island Administration*

# The Nevis Statistical Digest 2018



Copyright ©  
The Department of Statistics  
TDC Building  
Island Main Road, Charlestown, Nevis  
Email: [statsnevis@niagov.com](mailto:statsnevis@niagov.com)  
Telephone: 1 (869) 469 5521 Ext 2168/2169  
Fax: 1 (869) 469 0336

---

*Disclaimer:*

*While all care has been taken to produce accurate figures based on available data, the Department of Statistics does not accept any liability for any omission from such forecasts nor any loss or damage arising from the use of, or reliance on the information contained within this publication. The information presented in this publication does not reflect the opinion of the Department of Statistics.*



# *Our* MISSION

*To prepare meaningful, timely, accurate and reliable data, for purpose of decision making and macro-economic policy formulation; in an effort to stimulate economic development efforts by attracting new industry and investment to Nevis.*



# *Our* VISION

*That the statistics we publish are of the highest quality possible;  
That the general public will be confident that the information that they provide us with are secure;  
That the importance of the department will be recognized.*

*All we know about the world teaches us that the effects of A and B are always different - in some decimal place - for any A and B. Thus asking, "Are the effects different?" is foolish. - John Tukey*

# **CONTENTS**

*Tables*

*Foreword*

*Director's Message*

*Explanatory Notes*

Chapter 1

## **GENERAL INFORMATION ABOUT NEVIS**

- ⌘ Notable Local & Historical Events*
- ⌘ Structure of Nevis Island Administration & Elections Results*

Chapter 2

## **POPULATION AND VITAL STATISTICS**

- ⌘ Population/Population Growth, Ethnic Groups, Religion*
- ⌘ Birth, Death & Infant Mortality, Teenage Pregnancy*
- ⌘ Marriages, Location of Marriages and Divorces*

Chapter 3

## **INFRASTRUCTURE**

- ⌘ Housing/Households, Building Permits Issued*
- ⌘ Titles Issued and Deeds Registered*
- ⌘ Electricity Consumers and Production*
- ⌘ Water Consumption*

Chapter 4

## **TRANSPORTATION**

- ⌘ Importation of Vehicles, Registration and Licensing of Vehicles*
- ⌘ Drivers Written & Road Test, Traffic Accidents Recorded*
- ⌘ Aircraft Movements; Cargo Movements; Passengers Movements via Air Port*
- ⌘ Inter-Island Ferry Passengers Movements; Cargo Movements via Sea Ports*

Chapter 5

## **TOURISM**

- ⌘ Accommodation – Hotels, Hotel Rooms, Beds*
- ⌘ Visitors Arrivals – Stayovers, Arrivals to Nevis via RLB International Airport*
- ⌘ Length of Stay & Purpose of Visit(s)*
- ⌘ Yacht and Cruise Calls/Passengers Arrivals*

Chapter 6

## **HEALTH AND SOCIAL**

- ⌘ Intentional and Unintentional Injuries; Psychiatric Patients Registered*
- ⌘ Registered Diabetics & Hypertensive Patients at Health Centers*
- ⌘ Dental Unit Trend of Services Rendered; Infants/Toddlers Visit*
- ⌘ Social Services and Gender Affairs*

# **CONTENTS**

## Chapter 7

### **FINANCE**

- ⌘ *NIA Revenue and Expenditure*
- ⌘ *Inland Revenue Department*
- ⌘ *Customs Department*
- ⌘ *SKB/NEV GDP by Economic Activity in Current & Constant Prices*

## Chapter 8

### **EDUCATION**

- ⌘ *General Information on Pre-Schools, Nurseries, Primary, Secondary*
- ⌘ *Number of Public & Private Schools*
- ⌘ *Number of Students and Teachers (public & private)*
- ⌘ *Number of CXC Subjects Passes for Secondary Schools Students*
- ⌘ *CAPE Grade Distribution at the Charlestown Secondary Sixth Form College*
- ⌘ *Enrollment at the Charlestown Secondary Sixth Form College*
- ⌘ *Results from the Gulf Insurance Primary Schools Athletic Competition*
- ⌘ *Adult Education*

## Chapter 9

### **EMPLOYMENT**

- ⌘ *Unemployment Rate; Working Age Population*
- ⌘ *Employees by Selected Industries and Services*
- ⌘ *Work Permit Application by Sector*
- ⌘ *Work Permit Application by Sector & by Sex*
- ⌘ *Work Permit Application by Nationality*

## Chapter 10

### **AGRICULTURE PRODUCTION AND TRADE**

- ⌘ *Egg Production*
- ⌘ *Throughput at the Marketing Division*
- ⌘ *Production Analysis of Targeted Crops*
- ⌘ *Animals Slaughtered*
- ⌘ *Export of Sea Foods*
- ⌘ *Estimated Landings of Species of Fishes*
- ⌘ *Trade – Total value of imports and exports*
- ⌘ *Climate*

## Chapter 11

### **CRIMINAL OFFENCES AND FIRE CALLS REPORTED**

- ⌘ *Criminal Offences Reported*
- ⌘ *Fire Calls Reported*

## TABLES

### **Chapter 1: General Information about Nevis**

- 1.1 *Members of the Nevis Island Administration and portfolios*
- 1.2 *Member(s) of the Opposition Party*
- 1.3 *Nevis Island Elections, 1987-2017*
- 1.4 *Seat won in the Federal Elections, 1984-2015*
- 1.5 *Nevis Local Election Results, 2017*
- 1.6 *Federal Elections Results for Nevis, 1995-2010*

### **Chapter 2: Population and Vital Statistics**

- 2.1 *Census Day and Population, 1871- 2011*
- 2.2 *Nevis Intercensal Population Growth, 1871-2001*
- 2.3 *Nevis Population by Parish at Each Census, 1871-2001*
- 2.4 *Population by Sex and Parish in Nevis, 2001 and 2011*
- 2.5 *Population by Sex and Parish and Percentage Change, 2001/2011*
- 2.6 *Percentage Distribution and Comparison by Sex and Age Group*
- 2.7 *Population by Age Group and Parish, Census 2001*
- 2.8 *Population by Age Group and Parish, Census 2011*
- 2.9 *Population by Age 85+ by Parish, Census 2011*
- 2.10 *Population by Age 85+, Parish and Sex, Census 2011*
- 2.11 *Population by Ethnicity and Sex, Census 2011*
- 2.12 *Population by Ethnicity, Frequency and Percentage, Census 2011*
- 2.13 *Population by Religion and Sex, Census 2011*
- 2.14 *Median Age by Parish and Sex, Census 2001 and 2011*
- 2.15 *Nevis Births, Live and Crude Birth Live Rate, 2012-2016*
- 2.16 *Nevis Deaths, Crude Death Rate, 2010-2016*
- 2.17 *Nevis Infant Mortality Rate, Still Birth/Still Birth Rate, 2012 - 2016*
- 2.18 *Teenage Pregnancies by age in Nevis, 2010 - 2017*
- 2.19 *Teenage Birth and Teenage Birth Rate, 2010 - 2017*
- 2.20 *Location where Marriages took place in Nevis, 2010 - 2017*
- 2.21 *Marriages per Parish, 2010 - 2017*
- 2.22 *Number of Absolute Decree (divorces) granted in Nevis, 2010 - 2017*
- 2.23 *Places of Marriages broken down, 2010 - 2017*

### **Chapter 3: Infrastructure**

- 3.1 *Number of Households per decade, 1970 - 2011*
- 3.2 *Building Permits Issued by Sector in Nevis, 2010-2017*
- 3.3 *Building Permits Issued in Nevis, 2010-2017*
- 3.4 *Certificates of Title issued in the Supreme Court Registry Nevis, 2010-2017*
- 3.5 *Type of Deeds Registered in the Supreme Court Registry in Nevis, 2010-2017*
- 3.6 *Electricity Consumers & Electricity Production, 2010 - 2017*
- 3.7 *Water Consumption, 2010 -2017*

### **Chapter 4: Transportation**

- 4.1 *Number of vehicles imported 2012 - 2017*
- 4.2 *Number of vehicles registered, 2010 - 2017*
- 4.3 *Number of vehicles licensed, 2010 - 2017*
- 4.4 *Drivers Written Tests Taken in Nevis, 2010 - 2017*
- 4.5 *Driver's Road Tests Taken in Nevis, 2010-2017*
- 4.6 *Number of Accidents, Injuries and Fatalities, 2010 - 2017*

- 4.7 *Number of Aircraft Arrivals and Departures to and from VWAI, 2010-2017*
- 4.8 *Number of Cargo Movements to and from VWAI, 2010-2017*
- 4.9 *Passenger Arrivals and Departures per ½ year to and from VWAI, 2010-2017*
- 4.10 *Inter Ferry Passenger Movements between Charlestown & Basseterre, 2003 – 2011*
- 4.11 *Cargo Movements, Nevis (Seaport), 2010-2017*

### **Chapter 5: Tourism**

- 5.1 *Number of Hotels, Rooms & Beds in Nevis, 2010-2017*
- 5.2 *Monthly Visitors Arrivals, 2010 – 2017*
- 5.3 *Visitors Arrivals during Tourism Season, 2010 – 2017*
- 5.4 *Accommodation for Stayovers, 2010-2017*
- 5.5 *Visitors Arrivals from Traditional Territories, 2010 – 2017*
- 5.6 *Monthly Visitors Arrivals from the US Territories, 2010 – 2017*
- 5.7 *Length of Stay, 2010 – 2017*
- 5.8 *Purpose of Visits, 2010-2017*
- 5.9 *Stayover Visitors via RLB International Airport address to Nevis, 2012 – 2016*
- 5.10 *Percentage change per ½ year for Yachts and Cruise, 2010 – 2017*
- 5.11 *Number of Yachts and Cruise Ship Passengers in Nevis, 2010-2017*
- 5.12 *Number of Yachts and Cruise Ship Calls in Nevis, 2010-2017*
- 5.13 *Number of Cruise Ship Calls in Nevis during the Tourism Season, 2010-2017*
- 5.14 *Number of Cruise Ship Passengers during the Tourism Season, 2010-2017*
- 5.15 *Number of Yachts Calls during the Tourism Season, 2010-2017*
- 5.16 *Number of Yachts Passengers during the Tourism Season, 2010-2017*

### **Chapter 6: Health & Social**

- 6.1 *Selected Health Indicators for Nevis, 2010 - 2017*
- 6.2 *Intentional and Unintentional Injuries, 2010 - 2017*
- 6.3 *Infant Visits at Health Centres, 2010 - 2017*
- 6.4 *Toddlers Visits at Health Centres, 2010 - 2017*
- 6.5 *Infant Visits (new) at Health Centres, 2010 - 2017*
- 6.6 *Registered Psychiatric Patients by Age Range, 2010 - 2017*
- 6.7 *Registered Diabetic Patients by Sex and Health Centres, 2010 - 2017*
- 6.8 *Registered Hypertensive Patients by Sex and Health Centres, 2010 – 2017*
- 6.9 *Dental Statistics by Services Rendered and by Patients, 2010 – 2017*
- 6.10 *Number of Reported cases HIV/AIDS for Nevis, 2016 and 2017*
- 6.14 *Family Services Division Reported Cases in Nevis, 2010-2017*
- 6.15 *Hot Meals Statistics in Nevis, 2010-2017*

### **Chapter 7: Finance**

- 7.1 *Nevis Estimates – Actual Capital & Current Revenue/Expenditure, 2012-2017*
- 7.2 *Revenue and Expenditure Analysis, 2012-2017*
- 7.3 *Revenue collected from Inland Revenue, 2013-2017*
- 7.4 *Revenue collected from Customs and Excise Department, 2013-2017*
- 7.5 *Number of New Companies Registered, 2012-2017*
- 7.6 *Number of Active Entities, 2012-2017*
- 7.7 *Nevis Financial Services revenue collected quarterly, 2013-2017*
- 7.8 *St. Kitts and Nevis Gross Domestic Product by Economic Act in Current Prices, 2013-2017*
- 7.9 *St. Kitts and Nevis Gross Domestic Product by Economic Act in Constant (2006) Prices, 2013-2017*

## **Chapter 8: Education**

- 8.1 *General Information on Preschool and Nurseries*
- 8.2 *Number of Public & Private Primary Schools*
- 8.3 *Number of Students and Teachers in Public Primary Schools*
- 8.4 *Number of Students and Teachers in Private Primary Schools*
- 8.5 *Number of Public & Private Secondary Schools*
- 8.6 *Number of Students and Teachers in Public Secondary Schools*
- 8.7 *Number of Students & Teachers in Private Secondary School*
- 8.8 *CSEC Subject Passes for Charlestown and Gingerland Secondary School*
- 8.9 *CAPE Grade Distribution at Charlestown Secondary Sixth Form College*
- 8.10 *Enrolment at Charlestown Secondary Sixth Form College*
- 8.11 *Final Scores for Gulf Insurance Primary School Athletic Championship*
- 8.12 *Adult Education Classes coordinated by Education Department*

## **Chapter 9: Employment**

- 9.1 *Working Age Population by Sex and Parish*
- 9.2 *Unemployment and Unemployment Rate by Sex and Parish*
- 9.3 *Average Employees by Selected Industries and Services in Nevis, 2012-2017*
- 9.4 *Work Permit Applications by Sector in Nevis, 2010-2017*
- 9.5 *Work Permit Application by Sector and by Sex, 2012 - 2017*
- 9.6 *Work Permit Applications by Region/Nationality and by Sex, 2013-2017*

## **Chapter 10: Agriculture Production and Trade**

- 10.1 *Egg Production per quartile in Nevis, 2010-2017*
- 10.2 *Throughput per annum at the Marketing Division, 2013-2017*
- 10.3 *Comparison of imports via produce of ten targeted Crops, 2013-2017*
- 10.4 *Accumulative total of acreage formed and estimated yield, 2013-2017*
- 10.5 *Production analysis per quarter for 2013 of targeted crops*
- 10.6 *Production analysis per quarter for 2014 of targeted crops*
- 10.7 *Production analysis per quarter for 2015 of targeted crops*
- 10.8 *Production analysis per quarter for 2016 of targeted crops*
- 10.9 *Production analysis per quarter for 2017 of targeted crops*
- 10.10 *Production of popular animals slaughter annually*
- 10.11 *Export of Seafood (lbs) annually*
- 10.12 *Estimated landings of species of fishes, 2013-2017*
- 10.13 *Total Value of Imports, 2010 - 2017*
- 10.14 *Total Value of Exports, 2013 - 2017*
- 10.15 *Climate - Monthly Rainfall Data, 2010 - 2017*

## **Chapter 11: Crime Offences and Fire Calls**

- 11.1 *Crime Statistics (Reported) in Nevis, 2013-2017*
- 11.2 *Number of Fires by Category broken down by fire calls, 2013*
- 11.3 *Number of Fires by Category broken down by fire calls, 2014*
- 11.4 *Number of Fires by Category broken down by fire calls, 2015*
- 11.5 *Number of Fires by Category broken down by fire calls, 2016*
- 11.6 *Number of Fires by Category broken down by fire calls, 2017*



# Foreword

*Statistics is the subdivision of various topics dealing with the collection, classification, analysis and interpretation of numeric facts, which draws inferences on the basis of their quantifiable likelihood for quantitative and or qualitative variables. It also enables the users to make meaningful economic and social decisions.*

*The compilers of this annual digest, provides the means whereby its users could access useful information, and to this end, the Statistics Department is pleased to present the 2018 Statistical Digest. The data collected are grouped by themes to form a total of 11 chapters as every effort has been made to include figures for the period 2010 to 2017.*

*The figures are mainly annual totals for calendar months, where figures for earlier years may be found in previous editions. Improvements and revisions are continually made to enhance its value to its users.*

*Users may download a soft copy of this publication via the Nevis Island Administration's website, [www.nia.gov.kn](http://www.nia.gov.kn), at the Department of Statistics under documents and forms. For users with specific requirements, the Department of Statistics may be able to offer assistance.*

*Except where other copyright is indicated, and once used as intended, articles in this publication may be freely reproduced with acknowledgement of the Source(s). The Department welcomes your questions and or comments which can be send to:*

*The Director:  
Department of Statistics,  
TDC Building, Main Street,  
Charlestown, Nevis.*

# EXPLANATORY NOTES

The Digest		The formation for this digest comprises of 11 sections, which can be considered as the statistics indicators, which can be used to analyze the social and economic trends of the island of Nevis.  Some of these indicators include but not limited to population, infrastructure, health, education, tourism, agriculture, finance and crime.	
Reporting Period		The period under review commences on January 1 <sup>st</sup> 2010, and end on December 31 <sup>st</sup> 2017.	
Data Source		The data used in this publication was obtained mainly from administrative records of public and private sector agencies.	
Rounding		In some instances, data is rounded up/down to one or two decimal places.	
Symbols and Abbreviations			
%	Percentage	/	(between two consecutive years) indicates a Financial Year or School Year
in	Inches	GDP	Gross Domestic Product
brk	Break	-	Nil or Negligible
mm	Millimeter	TEU	Twenty Equivalent Units (containers are 20ft or 40ft)
con	Container	FOB	Freight on Board
km	Kilometer	LLC	Limited Liability Company
N/A	Not Applicable	NBCO	Nevis Business Company Ordinance
kg	Kilograms	Mw/h	Milliwatt per hour
lbs	Pounds	GNI	Gross National Income



*The Four Seasons Golf Course – (Photo courtesy of NIPA website)*

## **G** *eneral I nformation*

- ⌘ General Information about Nevis*
- ⌘ Climate*
- ⌘ Notable Local Events*
- ⌘ Historical Events*
- ⌘ Structure of Nevis Island Administration*
- ⌘ Election Results*

## Chapter 1

# General Information

---

*Nevis, a 36 square miles jewel lies near the top of the Lesser Antilles archipelago. Given the alias, 'Queen of the Caribees' in 1671, the island is accepted for its small, sombrero shape like statue. Its charm and tranquility will take you back in time when things were simpler, life more peaceful and stress was just a word. This gem intertwines as part of the Federation of St. Christopher and Nevis and has natural vegetation that is unparalleled.*

### **Area:**

*Nevis is 36 square miles (93 square kilometers). The island is 7 miles (11.2 km) long by 6 miles (9.6 km) wide.*

### **Location:**

*It is located about 200 miles south of Puerto Rico or approximately 17° North Latitude, and just west of Anguilla, approximately 62° West Longitude.*

### **Geographical Division (Parishes)**

*The island of Nevis is geographically divided into five parishes: St. Paul's, St. Thomas', St. James, St. Georges, and St. Johns.*

### **Highest Point:**

*Nevis is conical in shape with a volcanic peak known as Nevis Peak. It is the highest point on the island and stands at a height of 3,232 ft.*

### **Capital:**

*The island's capital is Charlestown.*

### **Airport:**

*Nevis' airport is named Vance W Amory International Airport (formerly Newcastle Airport). It is situated in St. James Parish and a journey from it to Charlestown, takes approximately 10 - 15 minutes.*

### **Religion:**

*One of the most important elements of the people of Nevis, is their religious beliefs which are traditionally founded on Christianity. As a people, who are linked to their past, Nevisians embrace Christian beliefs as taught by several denominations in the society. Traditionally, there were Anglican, Roman Catholic, Methodist, Baptist and Wesleyan Holiness. In recent times, others have been added including: Church of God, Brethren, Evangelical, Pentecostal, Seventh Day Adventist and Jehovah's Witness. From about the mid 1990's, with the influx of immigrants from other Caribbean countries, we have witnessed the practice of religious beliefs in Hindu, Bahai and Muslim.*

### **Banks:**

*The banking institutions on the island are: the RBTT Bank, the Bank of Nova Scotia, the Bank of Nevis, First Caribbean International Bank, The Development Bank of St. Kitts and Nevis and The St. Kitts Nevis & Anguilla National Bank. There are two credit unions, the Nevis Cooperative Credit Union and FND*

*Enterprise Cooperative Credit Union Ltd. Of these banking institutions, two are locally owned; the Bank of Nevis which has an international banking section and the St. Kitts Nevis & Anguilla National Bank.*

**Currency:**

*The official currency is the Eastern Caribbean Dollar. Foreign currency is convertible at commercial banks at the prevailing rate of exchange.*

**Air Services:**

*The main aircraft carriers are: Seaborne, Winair, Cape Air and Tradewind Aviation. Caribbean Helicopters Limited, FEDEX and DHL cargo airlines provide daily courier services.*

**Sea Services:**

*Transportation by sea can be accessed via: motor vessels Caribe Queen, Caribe Breeze, Caribe Surf, Mark Twain, Sea Hustler, Lady B, Sea Bridge and Apple Cyder. Water Sports Islander company operates a Sea Taxi service via Qualie Beach to St. Kitts.*

**Hospital:**

*There is one major hospital on the island, the Alexandra Hospital, located on Government Road, Charlestown. However, there are Parish Health Centres, opened daily to serve the general public.*

**Police & Fire Services:**

*There are four (4) Police Stations and two (2) Fire Stations on the island. Of the two fire stations, the main one is adjacent to the Charlestown Police Station and the other is located at the Vance W. Amory International Airport in Newcastle. The other police stations are Cotton Ground, New Castle and Gingerland.*

## **Notable Local Events**

### ***Tourism Week:***

*Mid-February*

### ***Nevis St. Kitts Swim:***

*1st Sunday in March*

*(Participants swim across 2.5 miles of sea water known as the Narrows between Nevis and St. Kitts)*

### ***Horse Racing:***

*Most Public Holidays*

*(The race track has no stopping gates and the track is not manicured, but there is no other race course in the world which has a backdrop of blue sea and a dormant volcano)*

### ***Drag Racing:***

*Most Public Holidays*

*(Drag racers from across the Leeward Islands participate in most of the meets. The drag race strip is located in St. James' Parish.)*

### ***Inter-Primary Athletics Championship***

*(Students of primary age compete on a yearly basis for track supremacy)*

### ***Nevis Blues Festival***

*April*

### ***St. Kitts and Nevis Sailing Regatta***

### ***Hanley's Road Fishing Tournament***

*May – June*

### ***Culturama***

*July – August*

*(Nevis' premier Cultural Festival. It is celebrated annually over the last weekend of July – August.)*

### ***Nevis Marathon & Running Festival***

*September*

*(Held on a testing course that has an imaginative combination of challenging hills and flat terrains, providing an opportunity for speed.)*

### ***Oualie Beach Fishing Tournament:***

*October*

*(Approximately 30 boats with fishermen from across the Leeward Islands compete on an annual basis for the largest catch)*

### ***Nevis International Triathlon:***

*November*

*(Flagship Sporting Event which attracts persons from across the globe.)*

## **Historical Events**

- 1493: Sighted and named by Christopher Columbus on his second voyage.
- 1834: Emancipation. (Abolition Act 1833 end slavery in the British Empire on 1<sup>st</sup> August.
- 1861: First Nevis postage stamp issued.
- 1899: The hospital was destroyed in a hurricane. It was located on Old Hospital Road.
- 1906: The Queen's House, once residence of the Governor was transformed into the hospital and named Alexandra Hospital after Queen Alexandra.
- 1950: The First Secondary School, (Charlestown Secondary) was opened.
- 1956: The Federal Colony of the Leeward Islands was dissolved and St. Kitts, Nevis and Anguilla became a separate colony.
  - Newcastle Airport opened.
- 1958: The colony of St. Kitts, Nevis and Anguilla entered the West Indies Federation as a single unit.
- 1959: M.V. Christena began its ferry service between Nevis and St. Kitts. It was 160 ft. in length and owned and operated by the Government.
- 1961: Nevisians, led by Eugene Walwyn, sought secession from St. Kitts.
- 1967: St. Kitts and Nevis attained Associated Statehood with Britain.

The new Constitution changed the status of St. Kitts-Nevis-Anguilla from Colony to Associated Statehood; however, the rebellion of Anguilla kept her from being part of the new State.

  - The new Constitution provided for the Nevis Local Council.
- 1970: M. V. Christena sank off Nag's Head, St. Kitts while on its journey to Nevis.

Approximately 240 passengers most of whom were Nevisians, perished.

  - A group of Nevisians formed the Nevis Reformation Party (NRP) with Simeon Daniel, a Lawyer by profession as the first President.
  - The Nevis Island Administration Building was constructed.
- 1974: The Nevis Dramatic and Cultural Society founded CULTURAMA, a festival dedicated to preserving the culture-music, dance, crafts and cuisine of Nevis.
- 1979: Introduction to Caribbean Examination Council (CXC) proficiency examinations for secondary students.
- 1980: The MV Caribe Queen went into service replacing the MV Liamuiga which was wrecked in St. Kitts by tropical storm David in August 1979.
  - February 19: Following the General Elections, the Nevis Reformation Party formed a coalition with the People's Action Movement. Simeon Daniel was given the portfolio as Minister of Finance.
- 1983: St. Kitts and Nevis attained political independence from Great Britain on September 19.
  - Princess Margaret unveiled the dedication plaque as part of the Independence Celebration.
  - Alexander Hamilton House was renovated to house the Nevis Island Assembly.

- Mr. Simeon Daniel became the first Premier in Nevis.
- Mr. Spencer Byron was named the first President of the Nevis Island Assembly following the attainment of Independence.
- The Nevis Island Administration built the Sixth Form College next to Charlestown Secondary (CSS).
- Mr. Herman Liburd became Speaker of the National Assembly.
- Mr. Weston Parris was appointed the first Deputy Governor General for Nevis.
- 1984: The Education Department changed the primary schools in Charlestown from segregated boys and girls schools to a co-educational platform.
- 1985: Queen Elizabeth II unveiled a plaque at the Power Station in Prospect.
  - SKANTEL replaced Cable and Wireless as the telecommunication provider.
- 1987: First post-independence (Local Island Assembly) elections held in December.
- 1988: The Nevis Water Department laid new lines in Nevis, the service was metered and from this time consumers began paying for water.
  - The Voice of Nevis (Radio VON) went on the air, becoming the first privately owned radio station in the Federation.
- 1989: In the Federal Elections voters returned the PAM/NRP coalition to office for a third straight term.
- 1990: First vote in Parliament for the Secession bid for Nevis. Needed 4/5 but other members of the NRP did not support Hon. Simeon Daniel.
- 1991: The first 5-Star Hotel – Four Seasons Resort was opened with John Stauss as General Manager and Isadore Sharpe as President of the Four Season brand.
- 1992: Local elections held on June 1. First change of Government in the Local Assembly. The Concerned Citizens Movement (CCM) led by Vance Amory won 3 of the 5 seats, replacing the Nevis Reformation Party (NRP) led Nevis Island Administration. Hon. Simeon Daniel was leader of the party.
  - June 5: Weston Parris, the Deputy Governor General died in office.
- 1994: His Royal Highest, the Duke of Edinburgh visited the island.
  - The first local born to be ordained Priest of the St. Paul's Anglican Church, Ernest Flemming.
- 1995: SKANTEL provided the first internet service on Nevis to Hanver Trust Company.
  - Hurricane Luis and Marilyn came back to back and caused severe damages.
  - His Honour, Eustace John was sworn in as the 2<sup>nd</sup> Deputy Governor General of Nevis.
- 1996: The Nevis Island Administration dedicated Phase One of the Waterfront renovation project on September 19th.
- 1997: In June the Nevis Island Assembly led by the Concerned Citizens Movement held the first reading of the Secession Ordinance, which called for a vote for separation from St. Kitts.

- *Following the local election, CCM returned to office and saw the first woman – Honourable Jean Nisbett-Harris elected to office.*
- *September - Paul Lawrence opened Lyn Jeffers private secondary school.*
- *Following the death of Mr. Spencer Byron, first President of the Nevis Island Assembly, the Hon. Marjorie Morton was appointed as President.*
- *1998: The Nevis Island Government finished the first phase of the airport expansion.*
  - *Hurricane George caused several damages.*
  - *There was a Referendum on Secession for Nevis that resulted in the "yes" vote failed by a narrow margin of 4%. (62% as opposed to 66%)*
  - *The Nevis Island Administration dedicated the deep-water port at Long Point on September 20th.*
  - *The first female Magistrate for District "C", Her Worship, Yasmin Clarke was appointed.*
- *1999: Hurricane Lenny came from the west side and caused severe damages.*
- *2000: Honourable Patrice D H Nisbett replaced Joseph Parry as the elected representative in Constituency #11.*
- *2001: The Nevis Island Administration undertook the first phase of the road improvement project (Newcastle to Cotton Ground).*
  - *The Nevis Island Administration opened the Charlestown Waterfront Phase Two Project and unveiled the Christiana Disaster Monument.*
- *2002: The Nevis Island Administration undertook the second phase of the road improvement project (Cotton Ground to Market Shop).*
  - *On September 19th the Newcastle Airport was renamed Vance W. Amory International Airport.*
- *2003: The Nevis Island Administration renovated and upgraded the Alexandra Hospital.*
- *2004: The newly built Combermere Primary School was officially opened and renamed the Violet O Jeffers-Nicholls Primary School on September 2nd.*
  - *Charlestown Post Office was officially reopened after months of renovation.*
- *2005: The Prospect Primary School was renamed the Ivor Walters Primary School on 22nd September.*
  - *October, saw the appointment of the First Resident Judge for Nevis, Her Ladyship, Justice Ianthea Leigertwood-Octave.*
- *2006: Opening of the Flamboyant Nursing Home.*
  - *The Nevis Reformation Party was elected to government after 14 years in opposition.*
- *2007: The Hon. Malcolm Guishard, Leader of the Opposition in the Federal Parliament died.*
  - *Honourable Mark Brantley was elected in a bi-election replacing Malcolm Guishard. He became Leader of Her Majesty Loyal Opposition in the National Assembly.*
  - *Charlestown Secondary School new wing was commissioned.*
  - *Official launch of the Sea Bridge ferry services at Cades Bay.*
  - *Official launch of the Golden Grove Housing Community in Brown Hill.*

- 2008 *Drilling for Geothermal energy commenced on Nevis*
  - *St. John's Primary School was commissioned*
  - *Official opening of Drag Race Strip in St. James Parish*
  - *Hurricane Omar caused severe damages and the closure of Four Season Hotel.*
- 2009: *St. Thomas Preschool in Jessups Village, was renamed the Inez France Preschool.*
  - *Nevis Netball Complex renamed after local netball pioneers Cicely Grell-Hull and Dora Stevens.*
  - *Official launch of the Harbour View Housing Development, in Ramsbury Site.*
  - *Preschoolers celebrate 25 years of Early Childhood Programme.*
- 2010: *Hon. Patrice Nisbett appointed as Attorney General in the Federal Government.*
  - *St. John's Primary School was renamed the Elizabeth Pemberton Primary School.*
  - *Grove Park was renamed Elquemedo T. Willett Park.*
  - *Maddens Wind Farm in St. James Parish officially opened.*
  - *Implementation of Value Added Tax (VAT) in the Federation of St. Kitts and Nevis.*
- 2011: *Housing Project in Cherry Garden officially opened on 14th January.*
  - *Nevis Reformation Party (NRP) was elected for a second term on 11th July.*
  - *Placement of a Memorial Monument was unveiled at Bath Cemetery in remembrance of M V Christina Disaster on 5th August.*
  - *On November 22nd Cape Air Airline offers service to Nevis.*
  - *Runarko Shakur Morton, former Leeward Islands Cricketer died as a result of a motor vehicle accident in Trinidad on March 4<sup>th</sup>.*
- 2012: *The Nevis Performance Arts Center (NEPAC) officially opened on April 28<sup>th</sup>.*
  - *Honourable Simeon Daniel, Nevis' First Premier died on May 27<sup>th</sup>.*
  - *A landmark Election Petition Case was held at the Charlestown High Court, January 16 – 24<sup>th</sup>.*
  - *The first elected seat, Nevis 2, to be legally declared "Null and Void".*
  - *Official opening of the Brown Hill Pharmacy in the Brown Hill Health Center.*
  - *The Court of Appeal up held its decision regarding the petition case.*
  - *In November, the NRP Administration dissolved parliament without setting an election date.*
- 2013: *January 22, Nevis Local Election. Concerned Citizens Movement won 3 of 5 seats.*
  - *Tradewind Aviation started operation from San Juan, Puerto Rico to Nevis on November 2<sup>nd</sup>.*
  - *November 27<sup>th</sup>, Belle Vue International School was renamed Nevis Academy under new management.*
- 2014: *January 15th, Seaborne Airlines began its airlift service between Nevis and Puerto Rico.*
  - *Samuel Hunkins Drive Waterfront was resurfaced on April 4<sup>th</sup>.*
  - *Special Education Unit in Nevis was renamed Cecele Thompson-Browne Integrated School on 29<sup>th</sup> April.*

- 2015: February 3<sup>rd</sup>, Official opening and renaming of two major roads in Charlestown:-  
The Hamilton Road which leads from Pump Road into Hamilton to the Carl Tucket Boulevard; and Pump Road which leads from the roundabout adjacent to the Bath Cemetery into the by-pass road to the Stuart Williams Drive.
  - February 20<sup>th</sup>, Caribbean Helicopters Limited started its operations from Nevis via Antigua.
  - February 22<sup>nd</sup>, Hon. Vance Amory, Premier of Nevis was sworn in as Senior Minister of Nevis Affairs, Minister of Labour, Social Security and Ecclesiastics Affairs in the National Assembly.  
Mark A G Brantley Minister of Foreign Affairs and Aviation in the National Assembly.
  - April 7<sup>th</sup>, the removal of Value Added Tax (VAT) from all food items, medical supplies and funeral expenses.
- 2016: May-June, Rol-J Williams, a student of the Gingerland Secondary School receives the highest grades within the Federation of St. Christopher and Nevis with 17 C.S.E.C passes and 17 Grade 1s.
  - July 20 – Opening ceremony of the newly constructed Social Security Building at Pinneys.
  - September 16<sup>th</sup>, Dr. Simeon Daniel was posthumous awarded as a National Hero of St. Kitts and Nevis.
  - October 28<sup>th</sup>, The Department of Information in the Nevis Island Administration (NIA) launched the digital platform of Nevis Television (NTV).
  - November 23<sup>rd</sup>, His Royal Highness Prince Harry made an official visit to Saint Kitts and Nevis.
- 2017: April 20<sup>th</sup>, A bust of the Rt Excellent Dr Sir Simeon Daniel, first Premier of Nevis and National Hero, was unveiled in Charlestown during an official ceremony. The bust is erected on the island main road in the vicinity of the Arthur Evelyn Building also known as the Nevis Tourism Authority (NTA) Building.
  - July 27<sup>th</sup>, Former Deputy Governor General of Nevis, His Hon Mr. Eustace John passed.
  - September 1<sup>st</sup>, Her Hon, Mrs. Marjorie Morton was sworn in as the Deputy Governor General in Nevis. She is the 3<sup>rd</sup> person to hold that position and the first as a woman.
  - October 25<sup>th</sup>, First in the politics of Nevis' History, a baton of leadership has been passed from one serving member to another of the same political party. The Hon Vance Amory (then Premier of Nevis) and Political leader of the Concerned Citizens Movement, passed the baton and leadership to the Hon Mark Brantley (then Deputy Premier of Nevis).
  - December 18<sup>th</sup>, Nevis Island Local Election was held. The Concerned Citizens Movement won 4 of the 5 seats.
  - December 19<sup>th</sup>, the Hon Mark A.G. Brantley was sworn into office as the 3<sup>rd</sup> Premier for the island of Nevis.

## Structure of the Nevis Island Administration

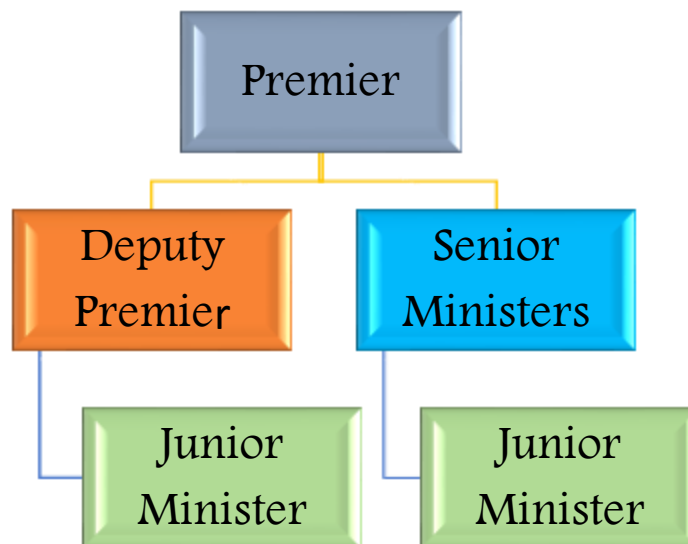
*Modeled off the West-Minister System with a Constitution as the Supreme Law, the Federation of St. Christopher and Nevis has a democratically elected government with a unicameral structure of parliament. The uniqueness of the 1983 Constitution Order of St. Christopher and Nevis, gives credence for autonomy for the island of Nevis.*



*With five (5) single-member constituencies and a majority rule voting system for a period of five years term of assembly, the constitution allows for a composition of the Nevis Island Assembly. As such, there are eight (8) parliamentary members who are elected and/or nominated to serve.*

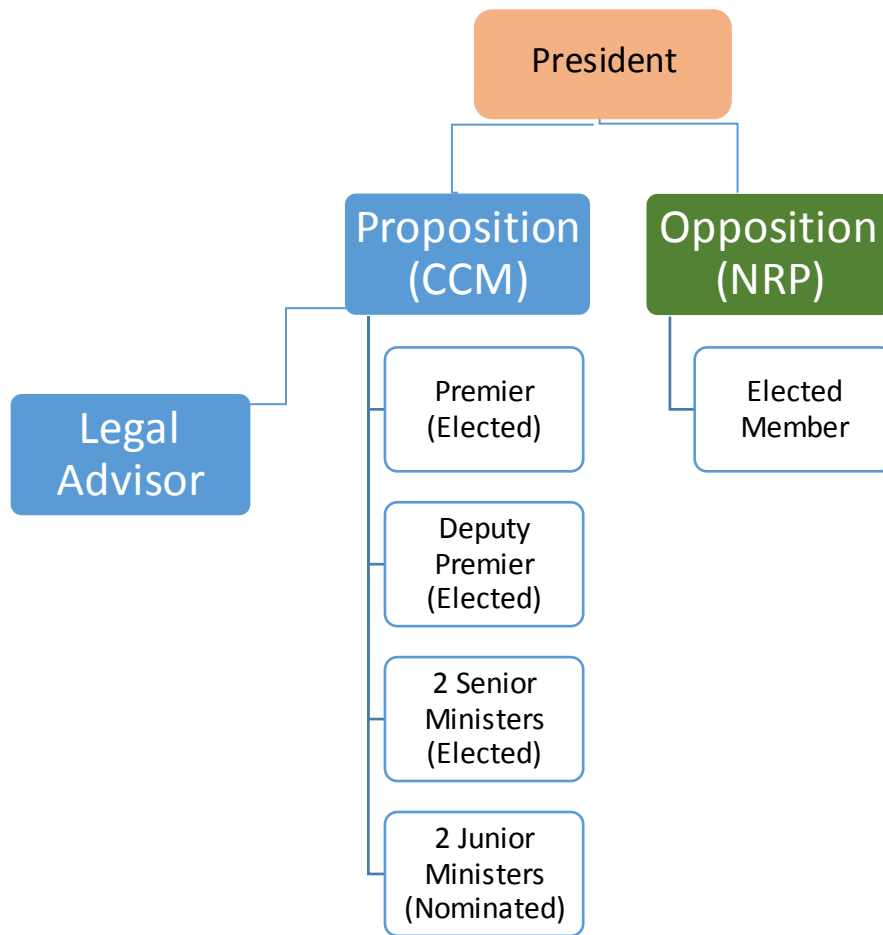
*As a constitutional monarchy within the Commonwealth of Nations, the Federation recognizes Queen Elizabeth 11 (British Monarch) or her successor as the titular head of government. The Monarch is represented on the island of Nevis by a Deputy Governor General appointed by the Governor General (titular head) of the Federation, who is constitutionally responsible for the government of both islands.*

*Since the realization of Independence in 1983, the island of Nevis is governed by an administrative division known as the Nevis Island Administration.*



*Organization chart displaying the composition of the Nevis Island Administration*

Chart displaying the composition of the Nevis Island Assembly as at December 31, 2017



*The Nevis Island Assembly has the authority to pass and or amend certain ordinances. When in session, the assembly is controlled by the President, who is presently, His Hon Mr. Farrell Smithen. He once held the position of Clerk of the Assembly from 1997 to 2003.*

*The Deputy Governor General is responsible for delivering the throne speech at the first sitting of the assembly following an election process. Presently, Her Honour, Mrs. Marjorie Morton holds the position of Acting Deputy Governor General, following the retirement of the Deputy Governor General Mr. Eustace John on 1st May, 2017. She has continued to do so at the end of 2017.*

*Table 1.2 below presents the Ministers of the Nevis Island Administration and their portfolios, while Table 1.3 shows the member(s) of the Opposition who was elected and the constituencies each elected representative represents.*

*Table 1.2: Members of the Nevis Island Administration and their portfolios as at December 31, 2017*

<b>Name of Minister</b>	<b>Area Representing</b>	<b>Portfolios</b>
<i>Mark A. G. Brantley</i>	<i>Elected representative for St. John Constituency, (Nevis 2)</i>	<i>Premier and Minister of Finance, Statistics, Economic Planning, Education &amp; Library Services, Trade, Industry &amp; Consumer Affairs, Human Resources, Tourism, Health, Information Technology, Public Utilities &amp; Energy and Foreign Investment.</i>
<i>Alexis A. Jeffers</i>	<i>Elected representative for St. James Constituency, (Nevis 4)</i>	<i>Deputy Premier and Minister of Agriculture, Land, Housing, Cooperatives and Fisheries, Natural Resources and Disaster Management.</i>
<i>Eric R. Evelyn</i>	<i>Elected representative for St. George Constituency, (Nevis 5)</i>	<i>Minister of Culture, Youth, Sports, Social Development, Community Development, Telecommunications &amp; Information.</i>
<i>Spencer R. Brand</i>	<i>Elected representative for St. Paul Constituency, (Nevis 1)</i>	<i>Minister of Labour, Public Works, Physical Planning, Post and the Environment.</i>
<i>U. Troy Liburd</i>	<i>Nominated member of Government</i>	<i>Junior Minister in the Premier's Ministry with special responsibilities for Education and Library Services and Information Technology.</i>
<i>Hazel Brandy-Williams</i>	<i>Nominated member of Government</i>	<i>Junior Minister in the Premier's Ministry with special responsibilities for Health and Gender Affairs.</i>

*Table 1.3: Member of the Opposition as at December 31, 2017*

<b>Name</b>	<b>Area Representing</b>	<b>Position</b>
<i>Joseph W Parry</i>	<i>Elected representative for St. Thomas Constituency, (Nevis 3)</i>	<i>No portfolio</i>

*Since obtaining independence as a Federation, the island of Nevis has participated in 16 elections by the end of December 2017. These elections comprised of 8 Federal Elections and 8 Local Elections. The charts below exhibit the two political parties, the Concerned Citizen Movement (CCM) and the Nevis Reformation Party (NRP) that contested the elections. (See charts following).*

Table 1.4: Seats won in the Nevis Island Elections 1987 - 2017

<b>Nevis Island Election (1987 - 2017)</b>									
<b>Year</b>		<b>1987</b>	<b>1992</b>	<b>1997</b>	<b>2001</b>	<b>2006</b>	<b>2011</b>	<b>2013</b>	<b>2017</b>
<i>Party</i>	CCM	1	3	3	4	2	2	3	4
	NRP	2	2	2	1	3	3	2	1
<b>Total Seats</b>		<b>3</b>	<b>5</b>	<b>5</b>	<b>5</b>	<b>5</b>	<b>5</b>	<b>5</b>	<b>5</b>

Table 1.5: Seats won in the Federal Elections 1984 - 2015

<b>Federal Election (1984 - 2015)</b>									
<b>Year</b>		<b>1984</b>	<b>1989</b>	<b>1993</b>	<b>1995</b>	<b>2000</b>	<b>2004</b>	<b>2010</b>	<b>2015</b>
<i>Party</i>	CCM	**	1	2	2	2	2	2	2
	NRP	3	2	1	1	1	1	1	1
<b>Seats won</b>		<b>3</b>	<b>3</b>	<b>3</b>	<b>3</b>	<b>3</b>	<b>3</b>	<b>3</b>	<b>3</b>

\*\* In 1984, when the island of Nevis participated in the Federal Election, there was only one political party established, the Nevis Reformation Party (NRP).

Table 1.6: Nevis Local Election Results for 2017

<b>Electoral District</b>	<b>Parish</b>	<b>Voters Allocated</b>	<b>Voter %</b>	<b>Votes Cast</b>	<b>Voter Turnout (%)</b>	<b>Leading/Winning Candidate</b>	<b>Party Affiliation</b>
Nevis 1	St Paul's	2,025	18%	1,196	59%	BRAND, Spencer	CCM Candidate
Nevis 2	St John's	3,909	35%	2,371	61%	BRANTLEY, Mark A G	CCM Candidate
Nevis 3	St George's	1,650	15%	1,000	61%	EVELYN, Eric	CCM Candidate
Nevis 4	St James'	2,338	21%	1,368	59%	JEFFERS, Alexis	CCM Candidate
Nevis 5	St Thomas'	1,381	12%	758	55%	PARRY, Joseph	NRP Candidate
		<b>11,303</b>	<b>100%</b>	<b>6,693</b>	<b>59%</b>		

Source: Electoral Office

Table 1.7: Nevis Federal Elections Results during the period 1995-2010

<b>Year</b>	<b>1995</b>					
	<i>Registered Voters</i>	<i>Voters Cast</i>	<i>Spoiled/Rejected</i>	<i>% Voted</i>	<i>CCM Party</i>	<i>NRP Party</i>
Constituency 9	2,520	1,352	6	53.7	722	624
Constituency 10	1,416	788	7	55.6	581	200
Constituency 11	2,071	1,173	2	56.6	474	697
<b>Year</b>	<b>2000</b>					
	<i>Registered Voters</i>	<i>Voters Cast</i>	<i>Spoiled/Rejected</i>	<i>% Voted</i>	<i>CCM Party</i>	<i>NRP Party</i>
Constituency 9	2,924	1,608	4	55.0	808	796
Constituency 10	1,517	743	4	49.0	555	184
Constituency 11	2,430	1,269	1	52.2	538	730
<b>Year</b>	<b>2004</b>					
	<i>Registered Voters</i>	<i>Voters Cast</i>	<i>Spoiled/Rejected</i>	<i>% Voted</i>	<i>CCM Party</i>	<i>NRP Party</i>
Constituency 9	3,918	1,853	6	47.3	986	861
Constituency 10	1,639	662	4	40.4	498	160
Constituency 11	2,659	1,168	3	43.9	498	667
<b>Year</b>	<b>2010</b>					
	<i>Registered Voters</i>	<i>Voters Cast</i>	<i>Spoiled/Rejected</i>	<i>% Voted</i>	<i>CCM Party</i>	<i>NRP Party</i>
Constituency 9	4,295	3,356	6	78.1	1,749	1,601
Constituency 10	1,110	8,90	0	80.2	665	225
Constituency 11	2,146	1,696	3	79.0	714	979
<b>Year</b>	<b>2015</b>					
	<i>Registered Voters</i>	<i>Voters Cast</i>	<i>Spoiled/Rejected</i>	<i>% Voted</i>	<i>CCM Party</i>	<i>NRP Party</i>
Constituency 9	6,129	3,768	20	61.5	2,033	1,715
Constituency 10	1,393	1,063	3	76.3	754	306
Constituency 11	3,584	2,425	6	67.7	1,164	1,255

Source: Statistics Office St. Kitts and Statistics Office Nevis



## **P** *opulation* & **V** *ital Statistics*

- ⌘ Population/Population Growth/Census Dates/Results*
- ⌘ Population - Ethnic Groups, Religion*
- ⌘ Vital Statistics - Birth, Death, Infant Mortality*
- ⌘ Teenage Pregnancy, Birth*
- ⌘ Marriages - Marriages by Parish, Places of Marriages, Divorces*

## Chapter 2

# Population & Vital Statistics

This section of the digest deals with information pertaining to the population on Nevis, tallied during each census between 1871 and 2011. It also pertains to births, deaths and infant mortality rate for the past five years. Likewise, data on marriages and divorces are part of this section.

The population throughout the last censuses has seen general declines and increases as the population continues to change with migration and immigration. Births and deaths also contribute to changes in the population and assist in calculating the median population between censuses.

Marriages and divorces also impact a country's population either through immigration or migration or the addition of children to the marriage.

The number of deaths and births are closely linked to changes in the population in any given year. Changes to the distribution of a county's age groups have economic and social impact as the size of the population in any country determines the demand for goods and services.

*Table 2:1: Census Day and Population Growth, 1871 – 2011, Source: Stats Office, SK/Nevis*

Census Day and Population, 1871 - 2011												
2 <sup>nd</sup> April 1871	4 <sup>th</sup> April 1881	5 <sup>th</sup> April 1889	7 <sup>th</sup> April 1901	2 <sup>nd</sup> April 1911	24 <sup>th</sup> April 1921	9 <sup>th</sup> April 1946	7 <sup>th</sup> April 1960	7 <sup>th</sup> April 1970	12 <sup>th</sup> April 1980	12 <sup>th</sup> May 1991	13 <sup>th</sup> May 2001	15 <sup>th</sup> May 2011
11,703	11,864	13,087	12,774	12,945	11,559	11,388	12,750	11,140	9,428	8,794	11,108	12,277

*Table 2:2: Inter-Censal Population Growth, 1871 – 2011, Source: Stats Office, SK/Nevis*

Census Year	Population	Population Growth	Inter-Censal change (%)	Annual Average rate of change (%)
1871	11,703	-	-	-
1881	11,864	161	1.4	0.14
1889	13,087	1223	10.3	1.03
1901	12,774	-313	-2.39	-0.24
1911	12,945	171	1.37	0.13
1921	11,559	-1376	-10.63	-1.06
1946	11,388	-181	-1.56	-0.15
1960	12,750	1382	12.14	0.87
1970	11,140	-1630	-12.76	-1.28
1980	9,428	-1712	-15.37	-1.54
1991	8,794	-634	-6.72	-0.67
2001	11,108	2314	26.31	2.63
2011	12,277	1,169	10.52	1.05

Table 2:3: Population by Parish at each Census, 1871 – 2011, Source: Stats Office, SK/Nevis

Year	St. Paul	St. John	St. George	St. Thomas	St. James
1871	2,034	2,492	3,285	2,036	1,856
1881	1,532	2,506	3,683	2,101	2,042
1889	1,563	2,822	4,172	2,162	2,368
1901	1,383	2,537	4,186	1,977	2,691
1911	1,337	2,825	4,414	1,856	2,513
1921	1,158	2,531	4,052	1,636	2,192
1946	1,806	2,373	3,355	1,546	2,308
1960	1,530	3,106	3,092	2,390	2,652
1970	1,469	2,622	2,778	2,149	2,122
1980	1,243	2,224	2,295	1,975	1,691
1991	1,411	2,191	2,086	1,613	1,493
2001	1,790	2,901	2,564	2,047	1,806
2011	1,847	3,827	2,496	2,069	2,038

Table 2:4: Population by Parish and Sex, 2001 and 2011 Source: Stats Office, SK/Nevis

Parish	2001			2011			Difference 2011/2001
	Male	Female	Both Sexes	Male	Female	Both Sexes	
St. Paul	883	907	1,790	906	941	1,847	57
St. John	1,414	1,487	2,901	1,854	1,973	3,827	926
St. George	1,248	1,316	2,564	1,242	1,254	2,496	-68
St. Thomas	997	1,050	2,047	1,083	986	2,069	22
St. James	881	925	1,806	1,041	997	2,038	232
Total	5,423	5,685	11,108	6,126	6,151	12,277	1,169

Table 2:5: Population by Parish & Sex, Percentage Change 2001/2011 Source: Stats Office, SK/Nevis

Population of Nevis, by Sex, 2001 and 2011					
Year		2001	2011	Change	Change (%)
				2001-2011	2001-2011
	<b>Total</b>	<b>11,108</b>	<b>12,277</b>	<b>1,169</b>	<b>10.5</b>
	Male	5,423	6126	703	13.0
	Female	5,685	6151	466	8.2

Table 2:6: Comparison between males and females and percentage distribution in 2011

Age Group	Population			Percentage Distribution		
	Male	Female	Total	Male	Female	Average
0 to 14	1,230	1,312	2,542	20.0	21.0	21.0
15 to 24	972	977	1,948	16.0	16.0	16.0
25 to 54	2,874	2,711	5,585	47.0	44.0	45.0
55 to 64	544	435	979	9.0	7.0	8.0
64 and over	506	717	1,223	8.0	12.0	10.0
<b>Total</b>	<b>6,126</b>	<b>6,152</b>	<b>12,277</b>	<b>100.0</b>	<b>100.0</b>	<b>100.0</b>

Table 2.7: Population by Age Group and Parish, Census 2001

Age Group	PARISHES					Total
	St Paul	St John	St George	St Thomas	St James	
Both Sexes	1,790	2,901	2,564	2,047	1,806	11,108
0-4	172	237	234	199	122	964
5-9	148	268	242	190	176	1,024
10-14	146	293	241	197	138	1,015
15-19	144	229	200	150	135	858
20-24	151	220	171	129	114	785
25-29	165	216	193	172	132	878
30-34	164	244	226	186	149	969
35-39	113	256	224	181	155	929
40-44	142	235	183	157	161	878
45-49	115	155	145	117	111	643
50-54	85	114	85	64	68	416
55-59	57	89	72	50	73	341
60-64	46	70	78	63	54	311
65-69	44	86	62	63	42	297
70-74	32	69	79	49	59	288
75-79	22	56	47	36	49	210
80-84	21	43	51	26	30	171
85+	23	21	31	18	38	131

Source: Department of Statistics, Nevis and the Statistics Division, St. Kitts

Table 2:8: Population by Age Group and Parish, Census 2011

Age Group (Both Sexes)	St Paul	St John	St George	St Thomas	St James	Total
0-4	104	245	110	83	88	630
5-9	134	298	172	140	120	864
10-14	170	354	210	176	138	1,048
15-19	150	306	230	180	158	1,024
20-24	136	288	198	131	172	925
25-29	141	248	179	146	131	845
30-34	150	270	181	129	150	880
35-39	163	308	176	194	137	978
40-44	125	272	194	174	159	924
45-49	106	307	203	177	141	934
50-54	155	299	194	225	150	1,023
55-59	97	195	141	84	160	677
60-64	52	84	56	67	43	302
65-69	60	96	61	34	94	345
70-74	27	69	51	35	64	246
75-79	32	77	56	43	38	246
80-84	17	43	37	15	30	142
85+	28	68	47	36	65	244
<b>Total</b>	<b>1,847</b>	<b>3,827</b>	<b>2,496</b>	<b>2,069</b>	<b>2,038</b>	<b>12,277</b>

Source: Department of Statistics, Nevis and the Statistics Division, St. Kitts

Table 2:9: Population by Age 85 and over and by Parish, Census 2011

Parish	85	86	87	88	89	90	91	92	93	94	95	96	97	98	99	103	104	Total
St. Paul	0	6	3	0	10	0	3	2	0	0	2	1	1	0	0	0	0	28
St. John	8	15	3	3	16	4	3	2	2	10	0	0	1	0	0	1	0	68
St. George	5	7	4	1	14	2	2	1	1	4	3	0	1	0	1	0	1	47
St. Thomas	8	3	0	3	14	1	0	1	0	6	0	0	0	0	0	0	0	36
St. James	2	5	4	5	15	0	18	3	2	6	1	0	2	1	1	0	0	65
<b>Total</b>	<b>23</b>	<b>36</b>	<b>14</b>	<b>12</b>	<b>69</b>	<b>7</b>	<b>26</b>	<b>9</b>	<b>5</b>	<b>26</b>	<b>6</b>	<b>1</b>	<b>5</b>	<b>1</b>	<b>2</b>	<b>1</b>	<b>1</b>	<b>244</b>

Source: Department of Statistics, Nevis

Table 2:10: Population by Age Group 85+, Parish and Sex, Census 2011

Parish	Gender		Total
	Male	Female	
St. Pauls	5	23	28
St. John	20	48	68
St. George	13	34	47
St. Thomas	17	19	36
St. James	26	39	65
<b>Total</b>	<b>81</b>	<b>163</b>	<b>244</b>

Source: Stats Office, SK/Nevis

Table 2:11: Population by Ethnicity and Sex, Nevis Census 2011 Source: Stats Office, SK/Nevis

Ethnic Groups, (Census 2011)		Male	Female	Frequency	Percent
Valid					
	African/Negro/Black	5,258	5,298	10,556	86.0
	Chinese	22	13	35	.3
	East Indian	383	338	721	5.9
	Hispanic	90	106	196	1.6
	Indigenous people	1	1	2	.0
	Mixed	166	204	370	3.0
	Portuguese	2	2	4	.0
	Syrian/Lebanese	5	3	8	.1
	White/Caucasian	173	168	341	2.8
	Other	26	18	44	.4
	<b>Total</b>	<b>6126</b>	<b>6151</b>	<b>12,277</b>	<b>100.0</b>

Table 2:12: Population by Ethnicity, Census 2011, Source: Stats Office, SK/Nevis

Population by Ethnicity on Nevis, 2011		
	Nevis	
	Frequency	Percent
African descent / Black	10,557	85.99
Chinese	35	0.29
East Indian	721	5.87
Hispanic	196	1.60
Indigeneous People	2	0.02
Mixed	370	3.01
Portugese	4	0.03
Syrian/Lebanese	8	0.07
White/Caucasian	340	2.77
Other/not stated	44	0.36
<b>Total</b>	<b>12,277</b>	<b>100.00</b>

Table 2:13: Population by Religion and Sex, Census 2011, Stats Office, SK/Nevis

<b>Population by Religion and Sex</b>			
	<b>Male</b>	<b>Female</b>	<b>Total</b>
Anglican	920	910	1,830
Baptist	192	224	416
Bahai	4	2	6
Brethren	145	161	306
Church of God	596	684	1,280
Evangelical	71	95	166
Hindu	204	194	398
Jehovah Witness	86	116	202
Methodist	1060	1028	2,088
Moravian	13	11	24
Muslim	53	29	82
Pentecostal	626	769	1,395
Presbyterian	23	27	50
Rastafarian	90	18	108
Roman Catholic	225	247	472
Salvation army	1	0	1
Seventh Day Adventist	401	447	848
Wesleyan Holiness	480	608	1,088
None	691	310	1,001
Other	245	270	515
Not stated	0	1	1
<b>Total</b>	<b>6126</b>	<b>6151</b>	<b>12,277</b>

Table 2:14: Median Age by Parish and Sex, Census 2001/2011 Stats Office, SK/Nevis

<b>Median Age by Parish and Sex, 2001 and 2011</b>							
	<b>2001</b>				<b>2011</b>		
	<b>Male</b>	<b>Female</b>	<b>Total</b>		<b>Male</b>	<b>Female</b>	<b>Total</b>
<b>Nevis</b>	<b>30</b>	<b>30</b>	<b>30</b>		<b>34</b>	<b>34</b>	<b>34</b>
<i>St. Paul</i>	28	29	28		32	33	32
<i>St. George</i>	30	29	30		34	32	33
<i>St. Thomas</i>	30	29	29		35	36	36
<i>St. James</i>	32	33	33		37	36	37
<i>St. John</i>	29	29	29		32	33	32

## Vital Statistics – (birth, death, infant mortality) (Source: Nevis' Health Promotion Unit)

Table 2.15: Nevis Births – Live, Crude and by Sex, 2010 – 2017

Year	2010		2011		2012		2013		2014		2015		2016		2017	
	F	M	F	M	F	M	F	M	F	M	F	M	F	M	F	M
Births	61	63	48	65	63	63	64	47	44	59	61	44	49	68	51	47
Total Births	124		113		126		111		103		105		117		98	
Total Live Births	123		109		125		110		102		102		115		n/a	
Crude Birth Rate	9.8		9.9		11.0		9.7		9.0		8.7		9.7		n/a	
Crude Live Birth Rate	9.9		9.5		11.0		9.6		8.9		8.5		9.6		n/a	

Table 2.16: Nevis Deaths and Crude Death Rate, 2010 – 2017

Year	2010		2011		2012		2013		2014		2015		2016		2017	
	F	M	F	M	F	M	F	M	F	M	F	M	F	M	F	M
Death	43	48	37	58	44	39	44	48	43	52	49	59	47	52	n/a	n/a
Total	91		95		83		92		95		108		99		n/a	
Crude Death Rate	7.3		8.3		7.4		8.1		8.1		8.7		8.2		n/a	

Table 2.17: Infant Mortality/Mortality Rate and Still Birth/Still Birth Rate, 2010 – 2017

Year	Total Infant Mortality	Total Infant Mortality Rate (per 1,000 live births)	Total Still Birth	Total Still Birth Rate (per 1,000 birth)
2010	2	16.4	1	8.1
2011	0	-	4	35.4
2012	2	16.0	1	7.9
2013	1	9.1	1	9.0
2014	1	9.8	2	19.4
2015	4	39.2	3	28.6
2016	3	26.1	2	28.6
2017	n/a	n/a	n/a	n/a

Table 2.18: Teenage Pregnancies by age, 2010 - 2017 (Source: Nevis' Health Promotion Unit)

AGE	YEAR							
	2010	2011	2012	2013	2014	2015	2016	2017
13	0	0	0	0	0	0	0	0
14	1	0	0	0	0	1	0	0
15	0	0	3	0	0	0	0	0
16	1	0	1	2	0	1	2	0
17	5	4	3	0	2	3	1	3
18	3	3	6	6	3	3	5	5
19	3	5	8	4	4	6	6	4
<b>Total</b>	<b>13</b>	<b>12</b>	<b>21</b>	<b>12</b>	<b>9</b>	<b>14</b>	<b>14</b>	<b>12</b>

Table 2.19: Teenage Birth and Teenage Birth Rate, 2010 - 2017, Source: Nevis' Health Unit

Year	Total Teenage Births	Total Teenage Live Births	Total Teenage Birth Rate (100 birth)	Total Teenage Birth Rate (100 live birth)
2010	13	13	10.5	10.6
2011	12	12	10.6	11.0
2012	21	21	16.8	16.8
2013	15	15	13.5	13.6
2014	9	9	8.7	8.8
2015	14	13	13.3	12.7
2016	14	14	12.0	12.2
2017	12	12	n/a	n/a

Table 2.20: Location where Marriages took place in Nevis, 2010 – 2017 (Source: Ministry of Health, Nevis)

Location/Year	2010	2011	2012	2013	2014	2015	2016	2017
<b>Church</b>	25	38	38	31	37	65	39	n/a
<b>Court House</b>	9	12	13	14	16	11	21	n/a
<b>Hotel</b>	34	37	31	25	29	28	20	n/a
<b>Others</b>	24	11	24	14	5	12	16	n/a
<b>TOTAL</b>	<b>92</b>	<b>98</b>	<b>106</b>	<b>84</b>	<b>87</b>	<b>116</b>	<b>96</b>	<b>n/a</b>

Table 2.21: Marriages per Parish, 2010 - 2017 (Source: Registry Office, Nevis)

Parish	2012	2013	2014	2015	2016	2017
<b>St. Paul</b>	18	23	22	20	33	27
<b>St. John</b>	19	17	11	20	21	13
<b>St. James</b>	15	11	11	19	15	12
<b>St. George</b>	8	5	40	5	4	4
<b>St. Thomas</b>	46	32	3	28	28	25
<b>Total Overall</b>	<b>106</b>	<b>88</b>	<b>87</b>	<b>92</b>	<b>101</b>	<b>81</b>

Table 2.22: Number of Absolute Decree (Divorce) granted, 2010 - 2017 (Source: Registry Office, Nevis)

Year	Duration of Marriages prior to divorces being granted, 2010 - 2017						Total divorces granted
	0-4	5-9	10-14	15-19	20-24	25+	
2010	0	6	7	3	2	2	20
2011	0	0	3	4	0	4	11
2012	2	2	5	5	2	1	17
2013	2	4	8	2	1	0	17
2014	1	5	7	3	3	4	23
2015	3	10	4	3	2	1	23
2016	0	4	8	4	4	2	22
2017	5	9	7	5	2	4	32

Table 2.23: Places of Marriage broken down, 2012 - 2016 (Source: Registry Office, Nevis)

Place of Marriage	2012	2013	2014	2015	2016
Anglican Churches	4	4	5	3	1
Baptist Churches	0	1	1	0	3
Bethel Apostolic Church	0	0	0	2	1
Church of Christ	1	0	0	1	1
Church of God	5	4	3	11	18
Church of God of Prophecy	3	1	0	3	0
Hotel (Pastor)	14	14	19	16	14
Hotel (Magistrate)	17	11	10	12	11
Jehovah Witness	1	0	1	0	0
Magistrates Office	13	18	16	11	21
Methodist Churches	2	6	3	4	1
New Testament Church	5	4	12	0	0
Other (Beach, Residence, etc)	24	14	5	12	13
Other Denomination	9	0	0	0	1
Pentecostal	3	6	8	9	11
Roman Catholic	0	1	1	1	0
Seventh Day Adventist	1	3	0	3	2
Wesleyan Holiness	4	1	3	4	3
<b>Total</b>	<b>106</b>	<b>88</b>	<b>87</b>	<b>92</b>	<b>101</b>



*Construction of the Bath Bridge in St. Johns' Parish – Source (Google.com)*

## **I nfr**rastructure

- ⌘ *Household per decade*
- ⌘ *Building Permits issue by sector for stages of development*
- ⌘ *Titles issue and Deeds register*
- ⌘ *Electricity Production and Electricity Consumers*
- ⌘ *Water Consumption*

## Chapter 3

# Infrastructure

---

Under this section information is given on the number of households tallied during censuses on Nevis; number of building permits issued; titles issued and deeds registered. Information is also presented on the electricity production and consumption as well as water consumption.

A household is a group of persons who make common provision of food, shelter and other essentials for living. Small average household sizes, of three persons were found to be the average household on Nevis in the last census of 2011.

The number of households is calculated during a census and is updated with assistance from the Physical Planning Department and the Property Valuation Department of Inland Revenue Department. Over the past five (5) censuses the number of households on Nevis has been steadily growing. The characteristics of households, including their size and composition contributes to sustainable development, poverty and assists with patterns of consumption which helps to shape the human impact on the environment.

Building Permits are issued by the Physical Planning Department within the Ministry of Communication. Building Permit is a person's formal permission to begin the construction, demolition, addition or renovation on their property. These permits can be commercial as well as residential. It is the duty of the Physical Planning Department to make sure building are built to the existing codes.

Titles and deeds for properties can be found at the Registry of the Supreme Court House in Charlestown. A Property Title is a bundle of rights in a piece of property in which a party may own either a legal interest or equitable interest. The rights in the bundle may be separated and held by different parties. It may also refer to a formal document, such as a deed, that serves as evidence of ownership. A Property Deed is a written and signed legal instrument that is used to transfer ownership of real property from the old owner (the grantor) to the new owner (the grantee).

Electricity and Water production and consumption are directly linked to the size of households within an economy. The number of persons within a household directly affects the consumption of electricity and water production on a monthly and yearly basis. Water and electricity are also consumed by commercial properties, thus the growth in this sector will affect both production and consumption.

Table 3.1: Number of Households, 1970 – 2011 (Source: Statistics Department, SK/Nevis)

Area	Household per decade from 1970 - 2011				
	1970	1980	1991	2001	2011
St. Paul	387	368	460	592	650
St. John	591	593	663	974	1,369
St. George	658	600	601	856	893
St. Thomas	509	527	485	742	834
St. James	484	455	477	668	881
<b>Total</b>	<b>2,629</b>	<b>2,543</b>	<b>2,686</b>	<b>3,832</b>	<b>4,627</b>

Table 3.2: Number of Building Permits Issued by Sector, 2010- 2017 (Source: Physical Planning, Nevis)

Sectors	2010	2011	2012	2013	2014	2015	2016	2017
Residential	167	169	206	122	167	165	159	198
Residential Villa	1	0	2	7	7	1	6	9
Residential/ Apartment	8	4	5	7	5	2	0	2
Commercial	24	29	19	26	22	11	32	19
Commercial/Residential	1	0	0	0	0	2	2	0
Industrial	0	2	0	0	2	0	0	0
Institutional	4	7	7	3	11	11	9	6
Hotel/Tourism	11	1	0	6	4	0	1	1
Other	7	5	2	12	3	4	4	5
<b>Total</b>	<b>223</b>	<b>217</b>	<b>241</b>	<b>183</b>	<b>221</b>	<b>196</b>	<b>213</b>	<b>240</b>

Table 3.3: Number of Building Permits Issued, 2010-2017 (Source: Physical Planning, Nevis)

Year	New Erections	Additions and Renovations	Removals	*Change of Use	Fencing	Pool	Other
2010	146	45	5	1	17	1	8
2011	136	44	6	1	23	1	6
2012	158	54	9	0	14	1	5
2013	120	30	3	0	18	5	7
2014	140	43	5	0	16	3	4
2015	126	39	7	0	20	2	2
2016	123	46	10	1	21	7	5
2017	165	47	6	1	12	2	7
<b>Total</b>	<b>1,114</b>	<b>348</b>	<b>51</b>	<b>4</b>	<b>141</b>	<b>22</b>	<b>44</b>

\* Change of use – usage of structure was changed from one purpose to another

Table 3.4: Number of Titles registered at the Registry of Titles, Supreme Court, Charlestown

Year	2010	2011	2012	2013	2014	2015	2016	2017
	409	389	355	370	333	346	411	316

Table 3.5: Type of Deeds registered at the Registry of Titles, 2010-2017 (Source: Supreme Court, Charlestown)

Type of Deed	2010	2011	2012	2013	2014	2015	2016	2017
Conveyance	63	44	53	54	51	45	34	42
Gifts	7	14	8	8	12	5	11	17
Vesting	7	18	8	8	5	14	7	12
Assent	10	17	10	10	19	26	22	50
Reconveyance	15	16	17	19	12	10	13	19
Mortgage	36	37	43	45	20	14	21	30
Debentures	1	1	1	1	0	0	0	0
Others	189	242	225	232	218	200	194	172
<b>Total</b>	<b>328</b>	<b>389</b>	<b>365</b>	<b>377</b>	<b>337</b>	<b>314</b>	<b>302</b>	<b>342</b>

Table 3.6: Electricity Consumers and Electricity Production, 2010-2017 (Source: Nevis Electricity Company)

Year	Consumer			Gross Generation (mw/h)	Maximum Demand	Load Factor
	Government	Domestic	Commercial			
2010	173	5,772	792	50,851,480	8.39	69
2011	171	5,820	784	52,976,300	8.85	70
2012	182	5,735	787	53,540,470	8.61	70
2013	194	5,911	788	52,465,950	9.73	86
2014	178	6,025	806	52,327,588	8.63	66
2015	178	6,100	817	55,112,474	8.70	60
2016	198	6,137	775	58,764,234	8.81	62
2017	176	6,319	779	55,783,639	9.33	62

Table 3.7: Water Consumption (per gallon) by Consumers, 2010 – 2017 (Source: Water Department, NIA)

Year	CONSUMER				
	DOMESTIC	COMMERCIAL	FARMERS	IRRIGATION	GOVERNMENT
2010	236,634,050	33,905,120	4,319,570	38,484,000	12,500,000
2011	218,303,210	77,738,950	6,392,130	52,194,500	15,300,000
2012	223,485,503	65,057,025	5,424,890	44,189,895	13,000,000
2013	221,366,630	68,502,480	5,025,990	32,711,100	14,400,000
2014	243,561,420	81,684,089	5,480,570	28,966,300	9,030,496
2015	242,293,498	85,934,300	5,018,680	25,423,900	46,039,880
2016	258,151,260	71,455,660	5,121,280	27,320,400	37,522,801
2017	247,092,883	66,441,980	4,898,140	19,997,784	18,584,350



*M V Caribe Queen docks at Charlestown Pier – Source (Google.com)*

## **T** ransportation

- ⌘ *Vehicles imported, registered and licensed*
- ⌘ *Drivers Written and Road Tests, Traffic Accidents recorded*
- ⌘ *Via Airport – aircraft, cargo and passengers movements*
- ⌘ *Via Seaport – Inter-island ferry passengers and cargo movements*

## Chapter 4

# Transportation

This section looks at registration of vehicles, number of licensed vehicles, number of written and road test, recorded traffic accidents, air and sea movements, cargo movements and trade.

A vehicle registration plate, also known as a number plate or a license plate is metal or plastic plate attached to a motor vehicle for official identification purposes. All countries require registration plates for road vehicles such as cars, trucks, and motorcycles. Here on Nevis vehicles licenses are done according to the month that corresponds to the last digit of the license plate. It is a legal requirement in Nevis for ALL types of motor vehicle to be registered if they are to be used on the public road. All new and imported vehicles are required to be registered and this is administered by the Traffic Department of the Police Force in conjunction with The Inland Revenue Department.

A potential driver is given a written test, to test the knowledge of how to operator a vehicle on the public road and to test the potential driver’s knowledge of road use and signs. Once this test has been passed the potential driver is then taken on a road test to prove their skills in manoeuvring the vehicle and adhering to traffic signs.

During any given year there are a number of traffic accidents that occurs. This information is captured by the Traffic Department within the Police Force showing the various types of traffic accidents that occurred.

**The movement of passengers and cargo by aircraft** has become the primary means of common-carrier traveling. This provides greater efficiency and value are obtained when long distances are traveled, high-value payloads are moved and immediate needs are met. Air transportation is a significant industry in the Nevisian economy. Air transportation is subjected to domestic and international policies due to the importance of trade, diplomacy and national development.

**Sea Transportation** refers to movement of goods and passengers on waterways by using various means like boats, steamers, launches and ships. The movement of person, goods and services between the twin island Federation of St. Kitts and Nevis, the region and internationally continues to impact economic growth.

*Table 4.1: Number of vehicles Imported, 2012- 2017 (Source: Customs Department)*

Year	2012	2013	2014	2015	2016	2017	Overall Total
	123	153	191	385	380	471	1,703

Table 4.2: Number of Vehicles Registered during the period 2010 - 2017 (Source: Traffic Department, RSCNPF)

<b>Category</b>	<b>Type of Vehicle</b>	<b>2010</b>	<b>2011</b>	<b>2012</b>	<b>2013</b>	<b>2014</b>	<b>2015</b>	<b>2016</b>	<b>2017</b>
<i>Private Cars and Motorcycles</i>	<i>Private Cars</i>	136	140	156	168	198	277	391	437
	<i>Private Jeeps</i>	207	182	164	231	232	280	435	458
	<i>Motorcycles</i>	10	2	15	13	13	10	41	21
	<i>Motor Scooters</i>	9	8	11	8	4	11	15	16
	<i>Gulf Car</i>	5	4	5	1	6	0	7	10
	<b>Total</b>	<b>367</b>	<b>336</b>	<b>351</b>	<b>421</b>	<b>453</b>	<b>578</b>	<b>889</b>	<b>942</b>
<i>Public Service Vehicles (all types)</i>	<i>Motor Omnibuses (passenger bus)</i>	15	10	11	11	11	49	20	18
	<i>Taxi Cars</i>	2	0	2	2	4	0	0	0
	<i>Taxi Jeeps</i>	1	5	3	2	3	0	1	0
	<i>Taxi Buses</i>	3	3	3	8	4	15	8	15
	<i>Rental Cars</i>	0	14	4	3	2	5	22	27
	<i>Rental Pickups</i>	0	0	0	0	0	0	1	0
	<i>Rental Jeeps</i>	16	15	16	34	20	35	45	45
	<i>Rental Buses</i>	0	0	1	3	0	6	1	5
	<i>Rental Motorcycles</i>	0	1	0	0	0	9	1	9
	<b>Total</b>	<b>37</b>	<b>48</b>	<b>40</b>	<b>63</b>	<b>44</b>	<b>119</b>	<b>99</b>	<b>119</b>
<i>Commercial Vehicles (all types)</i>	<i>Lorries</i>	26	19	12	17	38	38	44	65
	<i>Vans</i>	19	28	23	18	27	32	72	71
	<i>Other/Jeeps</i>	2	1	0	6	5	1	0	0
	<i>Pickups</i>	53	49	38	55	54	65	70	70
	<i>Tractors</i>	0	2	2	1	0	1	0	1
	<i>Loaders</i>	1	2	0	0	1	0	1	0
	<i>Forklifts</i>	0	0	0	0	2	0	0	2
	<i>Backhoes</i>	0	1	0	6	6	2	7	9
	<i>Cranes</i>	0	0	0	3	0	0	0	0
	<b>Total</b>	<b>101</b>	<b>102</b>	<b>75</b>	<b>106</b>	<b>133</b>	<b>139</b>	<b>194</b>	<b>218</b>
	<b>Overall Total</b>	<b>505</b>	<b>486</b>	<b>466</b>	<b>590</b>	<b>630</b>	<b>836</b>	<b>1,182</b>	<b>1,279</b>

Table 4.3: Number of vehicles licensed during the period 2010 – 2017 (Source Traffic Department, RSCNPF)

<b>Category</b>	<b>Type of Vehicle</b>	<b>2010</b>	<b>2011</b>	<b>2012</b>	<b>2013</b>	<b>2014</b>	<b>2015</b>	<b>2016</b>	<b>2017</b>
Private Cars and Motorcycles	Private Cars	1,343	1,334	1,317	1,336	1,331	1,509	1,623	1,792
	Private Jeeps	1,828	1,805	1,845	1,896	1,857	1,979	2,242	2,497
	Motorcycles	22	20	21	22	28	28	47	37
	Motor Scooters	16	8	16	14	13	32	36	25
	Gulf Car	11	17	18	8	13	1	8	15
	<b>Total</b>	<b>3,220</b>	<b>3,184</b>	<b>3,217</b>	<b>3,276</b>	<b>3,242</b>	<b>3,549</b>	<b>3,956</b>	<b>4,366</b>
Public Service Vehicles (all types)	Motor Omnibuses	73	69	69	71	63	187	90	91
	Taxi Cars	11	22	16	23	22	2	1	0
	Taxi Jeeps	15	10	18	15	13	25	13	4
	Taxi Buses	47	45	40	47	50	73	45	73
	Rental Cars	57	45	42	41	44	38	61	66
	Rental Pickups	3	4	8	4	4	0	0	1
	Rental Jeeps	176	165	160	186	187	179	199	230
	Rental Buses	13	8	10	11	8	16	2	20
	Rental Motorcycles	1	4	3	3	2	13	18	19
	<b>Total</b>	<b>396</b>	<b>372</b>	<b>366</b>	<b>401</b>	<b>393</b>	<b>533</b>	<b>429</b>	<b>504</b>
Commercial Vehicles (all types)	Lorries	206	196	203	188	175	222	193	246
	Vans	156	154	157	134	170	160	229	298
	Other/Jeeps	70	79	63	90	76	0	0	0
	Pickups	614	607	566	551	576	590	574	560
	Tractors	12	3	1	1	1	0	8	3
	Loaders	8	6	4	3	1	1	1	5
	Forklifts	6	6	4	4	3	2	1	0
	Backhoes	27	26	19	22	17	17	15	21
	Cranes	8	5	5	2	7	6	8	7
	<b>Total</b>	<b>1,107</b>	<b>1,082</b>	<b>1,022</b>	<b>995</b>	<b>1,026</b>	<b>998</b>	<b>1,029</b>	<b>1,140</b>
	<b>Overall Total</b>	<b>4,723</b>	<b>4,638</b>	<b>4,605</b>	<b>4,672</b>	<b>4,661</b>	<b>5,080</b>	<b>5,414</b>	<b>6,010</b>

*Table 4.4: Results of Written Test taken at the Traffic Department, 2010 - 2017 (Source Traffic Dept., RSCNPF)*

<b>Year</b>	<b>Number of Passes</b>	<b>Number Disqualified</b>	<b>Number of Failures</b>	<b>Total</b>
2010	232	0	366	<b>598</b>
2011	162	0	333	<b>495</b>
2012	165	0	317	<b>482</b>
2013	208	0	409	<b>617</b>
2014	233	0	397	<b>630</b>
2015	267	0	389	<b>656</b>
2016	161	0	617	<b>778</b>
2017	201	11	578	<b>790</b>

*Table 4.5: Results of Road Test taken at the Traffic Department, 2010 – 2017 (Source Traffic Dept., RSCNPF)*

<b>Year</b>	<b>Number of Passes</b>	<b>Number of Failures</b>	<b>Total</b>
2010	222	431	<b>653</b>
2011	182	287	<b>469</b>
2012	195	340	<b>535</b>
2013	222	367	<b>589</b>
2014	237	353	<b>590</b>
2015	266	344	<b>610</b>
2016	276	285	<b>561</b>
2017	226	352	<b>578</b>

*Table 4.6: Results of Traffic Accidents recorded at the Traffic Department during the period 2010 - 2017*

<b>Results of Accident</b>	<b>2010</b>	<b>2011</b>	<b>2012</b>	<b>2013</b>	<b>2014</b>	<b>2015</b>	<b>2016</b>	<b>2017</b>
<i>Fatalities</i>	1	1	0	2	2	2	0	0
<i>Serious Injury</i>	7	6	6	5	7	3	4	16
<i>Slight Injury</i>	29	32	31	37	35	30	42	56
<i>Non-Injury</i>	251	196	180	193	201	237	250	290
<b>Total Accidents</b>	<b>288</b>	<b>235</b>	<b>217</b>	<b>237</b>	<b>245</b>	<b>272</b>	<b>296</b>	<b>362</b>

*Source: Traffic Department of the Royal St. Christopher & Nevis Police Force, Division "C"*

Table 4.7: Aircraft Movements via Vance W Amory International Airport, 2010 - 2017

<i>Year</i>	<i>Per ½ Year</i>	<i>Arrival</i>	<i>Departure</i>	<i>Total</i>
2010	<i>June</i>	1,620	1622	3242
	<i>December</i>	1,726	1722	3448
	<b>Total</b>	<b>3346</b>	<b>3344</b>	<b>6690</b>
2011	<i>June</i>	1515	1516	3031
	<i>December</i>	1301	1298	2599
	<b>Total</b>	<b>2816</b>	<b>2814</b>	<b>5630</b>
2012	<i>June</i>	1663	1662	3325
	<i>December</i>	1402	1402	2807
	<b>Total</b>	<b>3068</b>	<b>3064</b>	<b>6132</b>
2013	<i>June</i>	1,626	1,629	3,255
	<i>December</i>	1,431	1,424	2,855
	<b>Total</b>	<b>3,057</b>	<b>3,053</b>	<b>6,110</b>
2014	<i>June</i>	1,821	1,819	3,640
	<i>December</i>	1,509	1,507	3,016
	<b>Total</b>	<b>3,330</b>	<b>3,326</b>	<b>6,656</b>
2015	<i>June</i>	2,090	2,090	4,180
	<i>December</i>	1,557	1,556	3,113
	<b>Total</b>	<b>3,647</b>	<b>3,646</b>	<b>7,293</b>
2016	<i>June</i>	1,974	1,971	3,945
	<i>December</i>	1,717	1,719	3,436
	<b>Total</b>	<b>3,691</b>	<b>3,690</b>	<b>7,381</b>
2017	<i>June</i>	1,819	1,824	3,643
	<i>December</i>	1,372	1,369	2,741
	<b>Total</b>	<b>3,191</b>	<b>3,193</b>	<b>6,384</b>

Source: Nevis Air & Sea Ports Authority

Table 4.8: Passengers movements via Vance W Amory International Airport, 2010 – 2017

<b>Year</b>	<b>Per ½ Year</b>	<b>Arrival</b>	<b>Departure</b>	<b>Total</b>
<b>2010</b>	<i>June</i>	6,030	5,693	11,723
	<i>December</i>	6,745	6,039	12,784
	<b>Total</b>	<b>12,775</b>	<b>11,732</b>	<b>24,507</b>
<b>2011</b>	<i>June</i>	1,212	6,114	7,326
	<i>December</i>	5,170	4,772	9,942
	<b>Total</b>	<b>6,382</b>	<b>10,886</b>	<b>17,268</b>
<b>2012</b>	<i>June</i>	5,217	5,522	10,739
	<i>December</i>	4,648	4,525	9,173
	<b>Total</b>	<b>9,865</b>	<b>10,047</b>	<b>19,912</b>
<b>2013</b>	<i>June</i>	5,296	5,517	10,813
	<i>December</i>	4,559	4,536	9,095
	<b>Total</b>	<b>9,855</b>	<b>10,053</b>	<b>19,908</b>
<b>2014</b>	<i>June</i>	5,323	5,786	11,109
	<i>December</i>	5,165	5,016	10,181
	<b>Total</b>	<b>10,488</b>	<b>10,802</b>	<b>21,290</b>
<b>2015</b>	<i>June</i>	5,211	5,648	10,859
	<i>December</i>	4,825	4,588	9,413
	<b>Total</b>	<b>10,036</b>	<b>10,236</b>	<b>20,272</b>
<b>2016</b>	<i>June</i>	5,498	5,935	11,433
	<i>December</i>	5,434	5,466	10,900
	<b>Total</b>	<b>10,932</b>	<b>11,401</b>	<b>22,333</b>
<b>2017</b>	<i>June</i>	5,186	5,607	10,793
	<i>December</i>	4,374	3,990	8,364
	<b>Total</b>	<b>9,560</b>	<b>9,597</b>	<b>19,157</b>

Source: Nevis Air & Sea Ports Authority

Table 4.9: Inter-Island Ferry Passengers movements during the period 2010 – 2017

<b>Year</b>	<b>Per ¼ Year</b>	<b>Arrivals</b>	<b>Departures</b>	<b>Total</b>
<b>2010</b>	March	31,514	30,084	61,598
	June	23,543	23,206	46,749
	September	25,304	26,081	51,385
	December	26,576	25,383	51,959
	<b>Total</b>	<b>106,937</b>	<b>104,754</b>	<b>211,691</b>
<b>2011</b>	March	29,661	27,863	57,524
	June	26,928	26,245	53,173
	September	31,731	31,057	62,788
	December	29,943	29,346	59,289
	<b>Total</b>	<b>118,263</b>	<b>114,511</b>	<b>232,774</b>
<b>2012</b>	March	29,684	26,416	56,100
	June	28,452	27,039	55,491
	September	32,332	30,565	62,897
	December	27,604	26,121	53,725
	<b>Total</b>	<b>118,072</b>	<b>110,141</b>	<b>228,213</b>
<b>2013</b>	March	31,989	30,025	62,014
	June	30,052	29,077	59,129
	September	29,850	29,003	58,853
	December	33,112	30,912	64,024
	<b>Total</b>	<b>125,003</b>	<b>119,017</b>	<b>244,020</b>
<b>2014</b>	March	27,579	26,499	54,078
	June	29,378	29,907	59,285
	September	33,176	33,491	66,667
	December	30,187	30,151	60,338
	<b>Total</b>	<b>120,320</b>	<b>120,048</b>	<b>240,368</b>
<b>2015</b>	March	36,607	35,145	71,752
	June	30,606	29,951	60,557
	September	34,837	34,579	69,416
	December	33,441	32,206	65,647
	<b>Total</b>	<b>135,491</b>	<b>131,881</b>	<b>267,372</b>
<b>2016</b>	March	34,942	34,207	69,149
	June	31,876	31,309	63,185

	September	38,100	36,530	74,630
	December	40,136	39,186	79,322
	<b>Total</b>	<b>145,054</b>	<b>141,232</b>	<b>286,286</b>
<b>2017</b>	March	43,462	40,594	84,056
	June	35,393	34,051	69,444
	September	36,790	35,478	72,268
	December	47,030	44,348	91,378
	<b>Total</b>	<b>162,675</b>	<b>154,471</b>	<b>317,146</b>

Source: Nevis Air and Sea Ports Authority

Table 4.10: Cargo Movement (per tonnage) via the Sea Ports, 2010 – 2017

Year	Month	OIL Tonnage	Sand, stone, etc Tonnage	Vehicle Tonnage	Vegetable Tonnage	Con. Tonnage	Brk Bulk Tonnage
2010	March	5,791	7,084	437	20	8,011	1,129
	June	4,257	6,117	299	263	7,763	255
	September	4,875	2,959	457	24	9,254	265
	December	3,241	8,040	133	22	10,790	557
	<b>Total</b>	<b>18,164</b>	<b>24,200</b>	<b>1,326</b>	<b>329</b>	<b>35,818</b>	<b>2,206</b>
2011	March	3,338	9,412	301	667	9,342	485
	June	4,780	17,785	453	719	7,585	375
	September	2,734	4,293	217	377	6,519	370
	December	4,100	3,031	262	426	8,755	425
	<b>Total</b>	<b>14,952</b>	<b>34,521</b>	<b>1,233</b>	<b>2,189</b>	<b>32,201</b>	<b>1,655</b>
2012	March	2,564	7,738	203	314	7,132	1,447
	June	3,286	7,957	204	240	6,828	477
	September	6,237	2,263	183	796	6,062	226
	December	2,512	8,548	198	109	10,432	393
	<b>Total</b>	<b>14,599</b>	<b>26,506</b>	<b>788</b>	<b>1,459</b>	<b>30,454</b>	<b>2,543</b>
2013	March	475	4,635	315	855	8,754	330
	June	3,918	5,834	168	561	8,340	293
	September	3,007	2,997	189	442	8,720	288
	December	6,735	3,309	356	686	9,693	348
	<b>Total</b>	<b>14,135</b>	<b>16,775</b>	<b>1,028</b>	<b>2,544</b>	<b>35,507</b>	<b>1,259</b>
2014	March	3,391	6,087	193	1,042	9,156	243
	June	5,331	4,179	728	1,197	9,605	258

	<i>September</i>	3,613	7,966	460	595	8,402	354
	<i>December</i>	5,931	7,739	456	1,281	10,296	384
	<b>Total</b>	<b>18,266</b>	<b>25,971</b>	<b>1,837</b>	<b>4,115</b>	<b>37,459</b>	<b>1,239</b>
2015	<i>March</i>	4,235	8,826	766	974	9,041	243
	<i>June</i>	3,484	9,260	422	855	8,443	193
	<i>September</i>	5,389	8,794	1,313	1,297	9,611	302
	<i>December</i>	6,707	3,193	1,135	1,198	10,996	425
	<b>Total</b>	<b>19,815</b>	<b>30,073</b>	<b>3,636</b>	<b>4,324</b>	<b>38,091</b>	<b>1,163</b>
2016	<i>March</i>	5,793	5,743	356	957	7,666	316
	<i>June</i>	8,258	7,121	921	1,003	8,598	792
	<i>September</i>	5,522	7,828	892	814	8,984	353
	<i>December</i>	6,062	3,895	605	1,212	9,889	392
	<b>Total</b>	<b>25,635</b>	<b>24,587</b>	<b>2,774</b>	<b>3,986</b>	<b>35,137</b>	<b>1,853</b>
2017	<i>March</i>	7,145	9,969	1,158	1,411	11,818	502
	<i>June</i>	7,756	9,535	580	1,092	12,535	504
	<i>September</i>	4,849	11,672	627	872	11,315	441
	<i>December</i>	10,155	10,982	402	936	12,112	179
	<b>Total</b>	<b>29,905</b>	<b>42,158</b>	<b>2,767</b>	<b>4,311</b>	<b>47,780</b>	<b>1,626</b>

Source: Nevis Air and Sea Ports Authority

Table 4.11: Cargo movements via Vance W Amory International Airport, 2010 - 2017

<i>Year</i>	2010	2011	2012	2013	2014	2015	2016	2017
<i>Cargo IN</i>	146,661	182,222	158,680	170,505	186,124	198,583	194,320	175,233
<i>Cargo OUT</i>	22,940	23,194	22,059	19,493	22,719	21,111	25,007	15,936
<b>Total Cargo (lbs)</b>	<b>169,601</b>	<b>205,416</b>	<b>180,739</b>	<b>189,998</b>	<b>208,843</b>	<b>219,694</b>	<b>219,327</b>	<b>191,169</b>



*Nevis Mango Festival – Source (Google.com)*

## **T** ourism

- ⌘ *Number of hotels, hotel rooms, beds*
- ⌘ *Visitors arrivals by air - Stayovers, Purpose of Visits*
- ⌘ *Visitors from Traditional Territories, Visitors from US States*
- ⌘ *Length of Stay*
- ⌘ *Arrivals by sea – Yacht and Cruise Calls/Passengers*

## Chapter 5

# *Tourism*

---

Tourism is the most vital industry in the Nevisian economy. In this section data is provided on accommodation, visitor's arrivals, stay over and length of stay. Information is also given on yachts and cruise calls to our shores.

Accommodation on Nevis tends to either be up in the cools of the hills with a spectacular view of the surrounding or near the coast for ease of a quick or leisurely dip in the cool blue waters. On Nevis there is choice of accommodations ranging from luxury hotels, colonial style inns, superb villas, contemporary condos, privately owned homes, bread and breakfast inns, seclude inns or the cool home of friends and family. All accommodations offers comfort and relaxation and a time for real rejuvenation.

Tourists come to Nevis for various reasons such as vacation, business, medical, sports or visiting friends and family etc and stays for different length of time. The arrivals at the Vance Amory International Airport varies each year sometimes with an upward trend and sometimes with a downward trend.

Yacht and Cruise Tourism plays a major role in our Tourism Sector. Over the years cruise calls are plentiful during the period of November to April in overlapping years the remainder of the year normally see a decline in cruise arrivals. Yacht tourism is one of the most developing niche tourism sectors around the world. Yachts tourism is not seasonal and there are days when there are a number of yachts anchor in or waters or just a few.

*Table 5.1: Number of Hotels, Rooms and Beds for the period, 2010 - 2016 (Source: Statistics Department, Nevis)*

<i>Year</i>	<i>No. of Hotels</i>	<i>No. of Rooms</i>	<i>No. of Beds</i>
2010	7	196	301
2011	8	368	507
2012	8	386	530
2013	8	386	533
2014	8	386	530
2015	8	386	530
2016	8	398	542
2017	7	356	552

*Table 5.2: Total Monthly Visitors Arrivals, 2010 - 2017 (Source: Statistics Department, Nevis)*

<b>Month</b>	<b>2010</b>	<b>2011</b>	<b>2012</b>	<b>2013</b>	<b>2014</b>	<b>2015</b>	<b>2016</b>	<b>2017</b>
January	690	824	763	1020	802	657	726	695
February	636	729	715	568	713	1,067	683	665
March	632	861	820	787	757	616	770	784
April	462	718	579	715	747	616	758	692
May	446	577	485	572	597	532	534	459
June	*	533	396	408	581	316	526	525
July	857	1,148	525	538	811	596	819	645
August	629	513	644	445	591	431	519	562
September	313	323	337	328	313	350	526	265
October	343	230	316	342	362	328	360	265
November	356	372	411	528	533	462	471	368
December	1,121	874	786	862	974	877	887	1,089
<b>Total</b>	<b>6,485</b>	<b>7,702</b>	<b>6,777</b>	<b>7,113</b>	<b>7,781</b>	<b>6,848</b>	<b>7,579</b>	<b>7,014</b>

*Table 5.3: Total Visitors Arrivals during the Tourism Season, 2010/11 - 2016/17 (Source: Statistics Dept., Nevis)*

<b>Tourism Season - Visitors Arrivals</b>							
<b>Year 2010/2011 to 2016/2017</b>							
<b>Months</b>	<b>2010/2011</b>	<b>2011/2012</b>	<b>2012/2013</b>	<b>2013/2014</b>	<b>2014/2015</b>	<b>2015/2016</b>	<b>2016/2017</b>
September	313	323	337	328	313	350	526
October	343	230	316	342	362	328	360
November	356	372	411	528	533	462	471
December	1,121	874	786	862	974	877	887
January	824	763	1,020	802	657	726	695
February	729	715	568	713	1,067	683	665
March	861	820	787	757	616	770	784
April	718	579	715	747	616	758	692
<b>Total</b>	<b>3,906</b>	<b>4,676</b>	<b>4,940</b>	<b>5,079</b>	<b>5,138</b>	<b>4,954</b>	<b>5,080</b>

*Table 5.4: Accommodations for Stayover Visitors, 2010 - 2017 (Source: Department of Statistics, Nevis)*

<b>Accommodation</b>	<b>2010</b>	<b>2011</b>	<b>2012</b>	<b>2013</b>	<b>2014</b>	<b>2015</b>	<b>2016</b>	<b>2017</b>
Hotel	1,798	3,265	2,920	3,219	3,307	2,635	3,135	2,494
Guest Houses	663	356	266	165	189	164	126	121
Apt/Villas	791	301	339	422	403	271	465	404
Other Accommodations	6,096	9,218	4,630	4,842	3,587	3,461	4,291	4,305
<b>Total</b>	<b>9,348</b>	<b>13,140</b>	<b>8,205</b>	<b>8,648</b>	<b>7,486</b>	<b>6,531</b>	<b>8,017</b>	<b>7,324</b>

Table 5.5: Total Visitors Arrival from Traditional territories, 2010 - 2017 (Source: Stats Dept., Nevis)

Year	USA	Canada	Europe	Caribbean	Other Caribbean	South America	Central America	Not Stated
2010	2,224	791	1,208	3,805	79	7	39	1,207
2011	4,943	1,048	1,896	4,409	173	57	21	651
2012	3,113	691	1,304	2,810	97	75	27	91
2013	3,761	662	913	2,800	121	30	13	368
2014	4,323	485	649	2,384	113	93	45	280
2015	3,133	345	872	2,465	145	50	13	261
2016	3,284	337	979	2,703	152	60	17	12
2017	2,797	289	706	2,931	142	58	18	30

Table 5.6: Total Monthly Visitors Arrival from United States territories, 2010 - 2016 (Source: Stats Dept., Nevis)

Year	Month											
	Jan	Feb	Mar	Apr	May	Jun	Jul	Aug	Sept	Oct	Nov	Dec
2010	274	187	193	114	87	0	172	100	50	49	84	457
2011	424	361	446	253	259	250	173	110	51	68	119	341
2012	351	334	342	236	165	149	155	142	90	77	159	305
2013	516	417	594	416	278	190	188	134	116	156	281	476
2014	469	421	474	443	335	231	384	331	157	165	308	605
2015	422	485	389	301	229	134	188	181	155	160	220	450
2016	435	374	355	330	209	226	215	197	184	138	187	443
2017	333	272	399	266	251	225	246	143	91	58	158	377

Table 5.7: Total Visitors Length of Stay, 2010 - 2016 (Source: Statistic Department, Nevis)

Year	Length of Stay (days)				
	1 - 3	4-7	8-14	15+	Not Stated
2010	1,234	2,011	1,314	1,094	728
2011	1,322	2,962	1,438	943	171
2012	1,215	2,684	1,316	956	225
2013	1,186	2,784	1,166	688	164
2014	1,438	3,000	1,415	880	876
2015	1,108	2,537	1,227	957	706
2016	1,389	3,110	1,319	1,671	70
2017	1,340	2,892	1,338	1,399	17

Table 5.8 Visitors Purpose of Visit, 2010 – 2017 (Source: Statistic Department, Nevis)

Year	Purpose of Visit				
	Vacation	Business	V.F.R	Study	Other
2010	3,985	759	452	488	681
2011	4,585	537	321	654	760
2012	3,898	722	323	646	806
2013	3,828	770	355	504	687
2014	4,650	924	414	666	953
2015	4,229	587	322	618	778
2016	4,823	634	365	618	965
2017	4,433	534	464	679	874

### **Stayover Visitors via RLB Airport Address to Nevis**

Table 5.9: Total Monthly Visitors Arrivals, 2012 - 2016 (Source: Statistic Department, St. Kitts)

Month	2012	2013	2014	2015	2016
January	2,362	3,742	2,464	2,587	2,707
February	2,698	2,657	2,535	3,253	2,699
March	2,916	3,385	3,248	3,333	2,981
April	2,324	2,037	2,288	2,610	2,705
May	1,925	2,100	2,394	2,026	1,753
June	2,409	2,047	2,315	1,907	n/a
July	1,971	2,812	2,351	2,866	n/a
August	1,438	1,395	1,528	1,705	n/a
September	765	909	806	859	n/a
October	1,188	1,032	1,022	1,229	n/a
November	2,070	2,013	1,847	2,277	n/a
December	2,566	2,817	2,405	2,947	n/a
<b>Total</b>	<b>24,632</b>	<b>26,946</b>	<b>25,203</b>	<b>27,599</b>	<b>12,839</b>

n/a - Not available

Table 5.10: Percentage change per ½ year for Yacht and Cruise passengers, 2010 - 2017

Year	Per ½ Year	Yacht Passengers	Cruise Passengers	Total Yacht and Cruise Passenger
2010	June	2,330	2,580	4,910
	December	1,091	962	2,053
	<b>Total</b>	<b>3,421</b>	<b>3,542</b>	<b>6,963</b>
Percentage change 2009/2010				15.4
2011	June	3,171	4,283	7,454
	December	1,293	994	2,287
	<b>Total</b>	<b>4,464</b>	<b>5,277</b>	<b>9,741</b>
Percentage change 2010/2011				(39.9)
2012	June	3,284	2,993	6,277
	December	1,076	1,027	2,103
	<b>Total</b>	<b>4,360</b>	<b>4,020</b>	<b>8,380</b>
Percentage change 2011/2012				(14.0)
2013	June	2,859	3,016	5,875
	December	2,890	1,048	3,938
	<b>Total</b>	<b>5,749</b>	<b>4,064</b>	<b>9,813</b>
Percentage change 2012/2013				17.1
2014	June	4,855	2,667	7,522
	December	752	360	1,112
	<b>Total</b>	<b>5,607</b>	<b>3,027</b>	<b>8,634</b>
Percentage change 2013/2014				(12.0)
2015	June	2,513	5,067	7,580
	December	775	1,629	2,404
	<b>Total</b>	<b>3,288</b>	<b>6,696</b>	<b>9,984</b>
Percentage change 2014/2015				16.0
2016	June	1,815	4,792	6,607
	December	349	4,191	4,540
	<b>Total</b>	<b>2,164</b>	<b>8,983</b>	<b>11,147</b>
Percentage change 2015/2016				11.6
2017	June	1,746	3,959	5,705
	December	1,281	5,747	7,028
	<b>Total</b>	<b>3,027</b>	<b>9,706</b>	<b>12,733</b>
Percentage change 2016/2017				14.2

Source: Statistic Department, Nevis

Table 5.11: Number of Cruise and Yacht Passengers to Nevis, 2010 - 2017 (Source: Statistic Department, Nevis)

Year	Yacht	Cruise
2010	526	3542
2011	496	5277
2012	572	4020
2013	1,813	4,064
2014	1,015	5,025
2015	3,288	6,696
2016	2,164	8,983
2017	3,027	9,706

Table 5.12: Number of Cruise and Yacht Calls to Nevis, 2010 – 2017 (Source: Statistic Department, Nevis)

Year	Cruise Calls	Yacht Calls
2010	25	846
2011	34	965
2012	31	963
2013	28	844
2014	38	714
2015	64	743
2016	41	514
2017	48	533

Table 5.13: Number of Cruise Calls during the tourism season in Nevis, 2010 – 2017 Source: Stats Dept, Nevis

Tourism Season - Cruise Calls							
Year 2010/11 to 2016/17							
Months	2010/2011	2011/2012	2012/2013	2013/2014	2014/2015	2015/2016	2016/2017
September	0	1	0	0	0	0	0
October	0	0	0	0	0	0	0
November	2	2	5	1	6	5	6
December	5	7	5	4	15	12	9
January	5	2	12	6	12	6	5
February	8	7	2	6	15	10	7
March	9	8	4	4	15	10	9
April	2	4	4	1	3	0	0
<b>Total</b>	<b>31</b>	<b>31</b>	<b>32</b>	<b>22</b>	<b>66</b>	<b>43</b>	<b>36</b>

Table 5.14: Number of Cruise Passengers during the tourism season in Nevis, 2010 – 2017

<i>Tourism Season - Cruise Passengers, 2010/11 to 2016/17</i>							
<i>Year</i>							
<i>Months</i>	<i>2010/2011</i>	<i>2011/2012</i>	<i>2012/2013</i>	<i>2013/2014</i>	<i>2014/2015</i>	<i>2015/2016</i>	<i>2016/2017</i>
<i>September</i>	0	31	0	0	0	0	0
<i>October</i>	0	0	0	0	0	0	0
<i>November</i>	117	137	488	145	360	176	2,764
<i>December</i>	845	826	539	903	1999	1453	1,427
<i>January</i>	666	193	1,312	801	2255	1417	1,262
<i>February</i>	1,121	919	228	1,009	1228	2326	949
<i>March</i>	2,233	1,504	954	755	1230	1049	1,748
<i>April</i>	263	377	522	102	346	0	0
<b>Total</b>	<b>5,245</b>	<b>3,987</b>	<b>4,043</b>	<b>3,715</b>	<b>7,418</b>	<b>6,421</b>	<b>8,150</b>

Table 5.15: Number of Yacht Calls during the tourism season in Nevis, 2010 – 2017 (Source: Stats Dept, Nevis)

<i>Tourism Season - Yacht Calls, 2010/11 to 2016/17</i>							
<i>Year</i>							
<i>Months</i>	<i>2010/2011</i>	<i>2011/2012</i>	<i>2012/2013</i>	<i>2013/2014</i>	<i>2014/2015</i>	<i>2015/2016</i>	<i>2016/2017</i>
<i>September</i>	11	14	9	3	13	4	0
<i>October</i>	22	25	26	22	23	6	4
<i>November</i>	32	49	58	53	37	23	23
<i>December</i>	81	102	72	68	65	48	24
<i>January</i>	143	141	111	84	103	104	60
<i>February</i>	146	139	123	125	126	136	93
<i>March</i>	196	182	145	152	173	63	85
<i>April</i>	103	144	139	87	101	80	83
<b>Total</b>	<b>734</b>	<b>796</b>	<b>683</b>	<b>594</b>	<b>641</b>	<b>464</b>	<b>372</b>

Table 5.16: Number of Yacht Passengers during the tourism season in Nevis, 2010/11 – 2016/17

<i>Tourism Season - Yacht Passengers, 2010/11 to 2016/17</i>							
<i>Year</i>							
<i>Months</i>	<i>2010/2011</i>	<i>2011/2012</i>	<i>2012/2013</i>	<i>2013/2014</i>	<i>2014/2015</i>	<i>2015/2016</i>	<i>2016/2017</i>
<i>September</i>	0	1	0	0	92	17	0
<i>October</i>	0	0	15	65	118	0	8
<i>November</i>	0	8	0	167	29	15	18
<i>December</i>	138	161	99	967	152	67	21
<i>January</i>	19	133	160	29	53	103	97
<i>February</i>	102	96	73	95	84	161	93
<i>March</i>	134	116	161	106	147	46	90
<i>April</i>	28	65	46	116	52	13	60
<b>Total</b>	<b>421</b>	<b>580</b>	<b>554</b>	<b>1,545</b>	<b>727</b>	<b>422</b>	<b>387</b>



## **H ealth & S ocial**

- ⌘ Intentional & Unintentional Injuries, Psychiatric patients registered*
- ⌘ Infant & Toddlers Visit*
- ⌘ Registered Diabetic & Hypertensive Patients*
- ⌘ Dental Unit trend of services rendered, Infants/toddlers visit*
- ⌘ Social Services and Gender Affairs – Reported cases to Family Services*

## Chapter 6

# *Health and Social*

There are many health issues affecting the Nevisian Public. These range from hypertension, diabetes, kidney disease, HIV/AIDS etc. There are data given for the prevalence of these disease here on Nevis along with Injuries recorded for patients seeking medical attention at the Alexandra Hospital.

Chronic and communicable diseases are devastating to individuals and community, threatening quality of life. The Pan American Health Organization (PAHO) noted that “the Caribbean has the highest death rates from heart disease and the top five countries for diabetes in the Americas” Among the countries in the Caribbean Community (CARICOM), heart disease ranks as the leading cause of death. Other conditions such as cancer, stroke, diabetes, and HIV are among the leading causes of death.

With this in mind the Ministry of Health through its Health Promotion Unit provides vital data on the prevalence of diabetes, hypertension and HIV/AIDS in the Nevisian community as well as ways to reduce the risk of illnesses, diseases and injuries and encourages the general public on ways to live healthy productive lives.

Nevis has grappled with some level of poverty in society and related problems for decades and thus anti-poverty strategies and social programmes had to be implemented. These social programs and assistances are designed to reduce poverty for the vulnerability groups and promotes sound economic decisions to assist in reducing welfare dependence. Social Assistance can be in either cash or in-kind, and are transferred to vulnerable individuals or households with no other means of adequate support, including single parents, the homeless, or the physically or mentally challenged.

These programmes includes but are not limited to hot meals program, food vouchers, baby sitter assistance, elderly day care, bus passes for the elderly, assistance to victims of domestic abuse and child protection.

*Table 6.1: Selected Health Indicators, 2012- 2017 (Source: Nevis Health Promotion Unit)*

<b>Health Indicators</b>	<b>2012</b>	<b>2013</b>	<b>2014</b>	<b>2015</b>	<b>2016</b>	<b>2017</b>
<i>Dispensaries</i>	1	1	1	1	2	2
<i>Health Centers</i>	6	6	6	6	6	6
<i>Hospitals</i>	1	1	1	1	1	1
<i>Hospital Beds</i>	52	52	52	52	52	52
<i>Hospital Beds in Use</i>	52	52	52	52	52	52
<i>Infirmiry Beds</i>	38	38	38	38	38	38
<i>Infirmiry Beds in Use</i>	38	38	38	38	38	38
<i>Major Operations</i>	140	149	155	103	150	148
<i>Hospital Admissions</i>	932	863	882	921	1,004	937
<i>Hospital Discharges</i>	953	885	858	920	1,019	954

Table 6.2: Intentional and Unintentional Injuries, 2012- 2017 (Source: Nevis Health Promotion Unit)

<b>Injuries</b>	<b>2012</b>	<b>2013</b>	<b>2014</b>	<b>2015</b>	<b>2016</b>	<b>2017</b>
Sexual Assault	10	9	5	8	12	9
Physical Assault	89	83	125	105	133	120
Domestic Violence	23	22	7	2	8	6
Motor Vehicle Accidents	61	59	99	120	186	176
Stabbing/Slashing	6	6	5	12	11	13

Table 6.3: Infant Visit at Health Centers, 2012- 2017 (Source: Nevis Health Promotion Unit)

<b>Health Center</b>	<b>2012</b>	<b>2013</b>	<b>2014</b>	<b>2015</b>	<b>2016</b>	<b>2017</b>
Charlestown	1,888	1,816	1,496	743	765	2,269
Gingerland	1,166	1,206	1,185	297	296	889
Brown Hill	813	1,037	1,124	497	509	1,194
Butlers	105	134	195	97	140	314
Combermere	484	499	372	234	201	153
Cotton Ground	450	453	432	259	289	558

Table 6.4: Toddlers Visit at Health Centers, 2012- 2017 (Source: Nevis Health Promotion Unit)

<b>Health Center</b>	<b>2012</b>	<b>2013</b>	<b>2014</b>	<b>2015</b>	<b>2016</b>	<b>2017</b>
Charlestown	748	333	402	201	218	519
Gingerland	388	414	416	188	138	320
Brown Hill	372	371	394	144	152	414
Butlers	45	40	57	55	52	80
Combermere	233	195	204	147	177	127
Cotton Ground	225	187	264	117	120	194

Table 6.5: Infants New Visit at Health Centers, 2012- 2017 (Source: Nevis Health Promotion Unit)

<b>Health Center</b>	<b>2012</b>	<b>2013</b>	<b>2014</b>	<b>2015</b>	<b>2016</b>	<b>2017</b>
Charlestown	57	57	57	62	80	59
Gingerland	34	33	28	26	26	24
Brown Hill	42	117	34	41	49	51
Butlers	6	10	16	5	15	11
Combermere	18	13	19	18	19	11
Cotton Ground	21	17	16	19	25	21

Table 6.6: Registered Psychiatric Patients by age range, 2013- 2016 (Source: Nevis Health Promotion Unit)

<b>Age Range</b>	<b>2013</b>	<b>2014</b>	<b>2015</b>	<b>2016</b>
10 - 19	32	32	32	28
20 - 29	82	82	82	80
30 - 39	85	85	85	94
40 - 49	63	63	63	69
50 - 59	78	78	78	78
60 - 69	44	44	44	43
70+	56	56	56	68
Not Stated	31	31	31	73
<b>Total</b>	<b>471</b>	<b>471</b>	<b>471</b>	<b>533</b>

Table: 6.7: Registered Diabetic Patients at different Health Centre in Nevis, 2010-2017 (Source: Health Promotion Unit, Nevis)

Health Centre	2010		2011		2012		2013		2014		2015		2016		2017	
	M	F	M	F	M	F	M	F	M	F	M	F	M	F	M	F
Charlestown	46	113	51	105	48	104	47	108	47	88	50	106	41	108	n/a	n/a
Brown Hill	23	33	22	38	23	34	19	36	21	34	18	36	20	34	n/a	n/a
Gingerland	54	113	57	107	51	100	53	94	57	97	49	86	49	92	n/a	n/a
Butlers	9	32	10	33	9	31	6	36	12	36	15	32	12	30	n/a	n/a
Combermere	13	36	12	35	14	38	12	39	13	37	13	32	14	31	n/a	n/a
Cotton Ground	16	26	17	24	15	28	19	28	20	25	18	27	17	31	n/a	n/a
Yearly Total	161	353	169	342	160	335	156	341	170	317	163	319	153	326	n/a	n/a
Combined Yearly Total	514		511		495		497		487		482		479		n/a	

Table: 6.8: Registered Hypertensive Patients at different Health Centre in Nevis, 2010-2017 (Source: Health Promotion Unit, Nevis)

Health Centre	2010		2011		2012		2013		2014		2015		2016		2017	
	M	F	M	F	M	F	M	F	M	F	M	F	M	F	M	F
Charlestown	39	78	40	89	42	85	48	76	80	40	39	81	33	81	n/a	n/a
Brown Hill	23	42	22	41	22	40	20	38	20	36	18	38	18	43	n/a	n/a
Gingerland	45	108	46	103	42	101	61	114	107	54	51	108	53	108	n/a	n/a
Butlers	7	18	9	17	7	16	17	26	27	46	31	44	29	44	n/a	n/a
Combermere	18	51	18	48	21	47	16	46	17	42	19	34	15	35	n/a	n/a
Cotton Ground	15	41	16	41	19	39	19	41	21	47	21	42	21	46	n/a	n/a
Yearly Total	147	338	151	339	153	328	181	341	272	265	179	347	169	357	n/a	n/a
Combined Yearly Total	485		490		481		522		537		526		526		n/a	

Table 6.9: Dental Unit trend by Services Rendered and by Patients 2010-2017 (Source: Health Promotion Unit, Nevis)

Year	Services Rendered									Patients		
	Extraction	Fillings	Prophylaxis/Cleaning	Sealants	Root Canal	Examinations	Prescription	Other	Totals	Adults	Children	Total
2010	634	1,212	949	62	112	2,137	N/A	186	5,293	2,013	1,695	3,708
2011	426	1,023	539	78	40	977	N/A	33	3,116	1,296	1,543	2,839
2012	356	1,098	977	40	42	1,096	N/A	70	3,679	1,402	1,556	2,958
2013	423	778	1,523	7	17	1,154	N/A	94	3,996	1,265	1,759	3,024
2014	541	1,241	1,054	27	24	705	126	81	3,799	2,075	1,164	3,239
2015	625	1,346	1,414	125	13	923	164	41	4,651	2,009	1,992	4,001
2016	572	1,275	1,445	49	8	995	137	25	4,506	1,941	1,940	3,881
2017	n/a	n/a	n/a	n/a	n/a	n/a	n/a	n/a	n/a	n/a	n/a	n/a

(n/a Not Available)

Table 6.10: HIV/AIDS Laboratory Cases at the Alexandra Hospital, 2016

Month		Alexandra Hospital Laboratory					
		No. of Tests Done	Male	Female	Unknown Gender	No. of Positives	No. of Negatives
1st Qtr	JAN	34	9	22	3	0	34
	FEB	27	4	22	1	0	27
	MAR	28	5	21	2	0	28
2nd Qtr	APR	34	6	26	2	1	33
	MAY	40	11	29	0	0	40
	JUN	27	3	23	1	0	27
3rd Qtr	JUL	32	11	21	0	0	32
	AUG	28	7	21	0	0	28
	SEO	32	4	28	0	0	32
4th Qtr	OCT	24	6	17	1	0	24
	NOV	33	8	25	0	0	33
	DEC	45	9	36	0	0	45
<b>TOTAL</b>		<b>384</b>	<b>83</b>	<b>291</b>	<b>10</b>	<b>1</b>	<b>383</b>

Table 6.11: HIV/AIDS Laboratory Cases at the Avalon Medical Centre, 2016

Month		Avalon Medical Laboratory (Pte)					
		No. of Tests Done	Male	Female	Unknown Gender	No. of Positives	No. of Negatives
1st Qtr	JAN	12	3	9	0	0	12
	FEB	10	3	7	0	0	10
	MAR	14	5	9	0	0	14
2nd Qtr	APR	5	1	4	0	0	5
	MAY	4	1	3	0	0	4
	JUN	10	4	6	0	0	10
3rd Qtr	JUL	11	5	6	0	0	11
	AUG	12	5	7	0	0	12
	SEO	9	3	6	0	0	9
4th Qtr	OCT	12	8	4	0	0	12
	NOV	8	3	5	0	0	8
	DEC	13	8	10	0	0	18
<b>TOTAL</b>		<b>120</b>	<b>49</b>	<b>76</b>	<b>0</b>	<b>0</b>	<b>125</b>

Table 6.12: HIV/AIDS Laboratory Cases at the Alexandria Hospital, 2017

Month		Alexandria Hospital Laboratory					
		No. of Tests Done	Male	Female	Unknown Gender	No. of Positives	No. of Negatives
1st Qtr	JAN	37	4	31	2	0	37
	FEB	32	7	25	0	0	32
	MAR	52	6	44	2	0	52
2nd Qtr	APR	33	8	25	0	0	33
	MAY	33	4	28	1	0	33
	JUN	46	10	34	2	0	46
3rd Qtr	JUL	34	7	27	0	0	34
	AUG	35	6	29	0	0	35
	SEO	51	5	44	2	0	51
4th Qtr	OCT	35	5	30	0	1	34
	NOV	40	5	34	1	0	40
	DEC	27	1	26	0	0	27
<b>TOTAL</b>		<b>455</b>	<b>68</b>	<b>377</b>	<b>10</b>	<b>1</b>	<b>454</b>

Table 6.13: HIV/AIDS Laboratory Cases at the Avalon Medical Centre, 2017

Month		Avalon Medical Laboratory (Pte)					
		No. of Tests Done	Male	Female	Unknown Gender	No. of Positives	No. of Negatives
1st Qtr	JAN	4	2	2	0	0	4
	FEB	12	6	6	0	0	12
	MAR	15	5	10	0	0	15
2nd Qtr	APR	6	1	5	0	0	6
	MAY	14	4	10	0	0	14
	JUN	11	5	6	0	0	11
3rd Qtr	JUL	15	3	12	0	0	15
	AUG	14	5	9	0	0	14
	SEO	8	0	8	0	0	8
4th Qtr	OCT	9	4	5	0	0	9
	NOV	10	4	6	0	0	10
	DEC	14	6	8	0	0	14
<b>TOTAL</b>		<b>132</b>	<b>45</b>	<b>87</b>	<b>0</b>	<b>0</b>	<b>132</b>

## Social Statistics

Table: 6.14: Reported cases from Family Service Division, Nevis 2010 - 2017

Year	Child Abuse	Maintenance	Domestic Issues	Mediation Counselling	Attempted Suicide	Juvenile Matters
2010	66	12	12	3	2	32
2011	61	18	6	6	2	27
2013	43	14	4	6	0	8
2014	16	12	6	31	0	20
2015	23	6	7	37	0	27
2016	25	7	2	20	0	33
2017	40	8	0	31	1	16

Table: 6.15: Hot Meals program by Parish and Gender, Nevis 2010 - 2017

Year	Parishes										Total		
	St. Pauls		St. Thomas		St. James		St. George		St. Johns		Male	Female	Both
	Male	Female	Male	Female	Male	Female	Male	Female	Male	Female			
2010	0	0	6	0	4	5	6	7	3	10	19	22	41
2011	3	2	6	12	4	6	7	7	3	9	23	36	59
2012	5	8	3	4	8	12	6	8	3	11	25	43	68
2013	9	11	5	3	6	9	6	10	2	11	28	44	72
2014	9	9	6	3	6	9	7	13	2	8	30	42	72
2015	8	9	7	3	7	9	8	13	2	8	32	42	74
2016	9	8	8	4	4	4	7	11	7	9	35	36	71
2017	6	5	7	3	8	8	8	11	6	7	35	34	69

Source: Social Services Department, Nevis



## **F** *inance*

- ⌘ *NIA Revenue and Expenditure*
- ⌘ *Inland Revenue Department*
- ⌘ *Customs Department*
- ⌘ *Financial Services – companies register*
- ⌘ *SKB/NEV GDP by economic activity in Constant & Current Prices*

## Chapter 7

# Finance

Covered under this section are Nevis Island Administration (NIA) Revenue and Expenditure. Revenue data is available from Inland Revenue Department, Customs Department and Financial Services. Also Gross Domestic Product (GDP) by constant and current and Gross Domestic Product by Economic Activity.

**Revenue** can be defined as the total amount of money generated by a company's operations for a certain period of time while **expenditure** is payment of cash or cash-equivalent for goods or services, or a charge against available funds in settlement of an obligation as evidenced by an invoice, receipt, voucher, or other such document.

The revenues of the NIA is collected mainly from taxes, fines, charges, licenses, levies and duties. The Inland Revenue, Customs and Financial Services Departments are the three most import revenue collectors. The financial position is calculated by subtracting Expenditure from Revenue. A surplus is derived when revenue is more than expenditure and a deficit is derived when revenue is less than expenditure.

The Gross Domestic Product (GDP) is the total value of everything produced by all the people and companies in the country.

*Table: 7.1: Actual Capital & Current Revenue & Expenditure, NIA, 2012 - 2017*

	<i>Actual 2012</i>	<i>Actual 2013</i>	<i>Actual 2014</i>	<i>Actual 2015</i>	<i>Actual 2016</i>	<i>Estimates 2017</i>
<i>Current Revenue</i>	116,514,870	121,055,560	128,468,450	133,857,250	139,903,778	140,255,640
<i>Current Expenditure</i>	126,131,653	125,250,230	133,995,785	130,488,336	143,669,182	157,294,950
<i>Capital Revenue</i>	19,141,026	8,272,370	13,163,251	26,640,030	12,548,332	51,115,100
<i>Capital Expenditure</i>	17,681,686	9,634,700	23,548,636	25,927,065	36,300,626	79,007,100

*Source: Ministry of Finance, Nevis*

Table 7.2: Revenue and Expenditure Analysis, 2012 – 2017

Items	2012 Actual	2013 Actual	2014 Actual	2015 R Actual	2016 Actual	2017 Actual
<b>Sources of Revenue</b>						
Reg. of Offshore Cos.& Trust	11,657	12,518	12,764	13,843	14,120	13,264
Annual Fees	7,773	8,324	8,476	12,699	11,468	9,634
Consumption Tax	217	297	39,614	207	105	56,484
Import Duties	8,716	9,625	10,620	11,580	11,424	11,744
Hotel Room & Restaurant Tax	13	0	0	0	0	0
Other	99,655	98,564	58,885	95,528	95,787	37,798
<b>Total Recurrent Revenue</b>	<b>128,031</b>	<b>129,328</b>	<b>130,059</b>	<b>133,857</b>	<b>132,904</b>	<b>128,924</b>
<b>Expenditure</b>						
Personal Emoluments	37,412	40,362	43,662	43,094	49,217	52,896
Wages	18,702	20,082	21,231	22,191	26,330	25,651
Retiring Benefits	7,631	7,943	7,934	7,944	9,667	9,782
Loan Repayment	9,349	10,685	9,204	6,982	8,413	7,748
Interest Payment	21,803	18,058	16,689	15,463	15,271	16,683
<b>Total non-discretionary Expenses</b>	<b>94,897</b>	<b>97,130</b>	<b>98,720</b>	<b>95,674</b>	<b>108,898</b>	<b>112,760</b>
Other	21,886	17,435	26,072	27,832	26,358	27,803
<b>Total Recurrent Expenditure</b>	<b>116,783</b>	<b>114,565</b>	<b>124,792</b>	<b>123,506</b>	<b>135,256</b>	<b>140,563</b>
<b>Capital Expenditure</b>						
<b>Recurrent Surplus/(deficit)</b>	<b>11,248</b>	<b>14,763</b>	<b>5,267</b>	<b>10,350</b>	<b>-2,352</b>	<b>-11,639</b>
Total Capital Expenditure	51,801	9,635	23,549	25,927	36,301	79,007
<b>Total Expenditure</b>	<b>168,584</b>	<b>124,200</b>	<b>148,341</b>	<b>149,433</b>	<b>171,557</b>	<b>219,570</b>
Capital Revenue	34,566	8,272	13,163	26,640	12,548	51,115
<b>Total Revenue</b>	<b>162,597</b>	<b>137,600</b>	<b>143,222</b>	<b>160,496</b>	<b>145,452</b>	<b>180,039</b>
<b>Total Surplus/(Deficit)</b>	<b>-5,987</b>	<b>13,400</b>	<b>-5,119</b>	<b>11,063</b>	<b>-26,105</b>	<b>-39,531</b>
<b>Percentage Analysis</b>						
Debt Service/Recurrent Revenue (%)	24.3	22.2	19.9	16.8	17.8	18.9
Debt Service/Recurrent Expenditure (%)	26.7	25.1	20.7	18.2	17.5	17.4
Recurrent Revenue Growth (%)	-7.0	-1.0	-0.6	-2.9	0.7	3.0
Recurrent Expenditure Growth (%)	-5.8	1.9	-8.9	1.0	-9.5	-3.9
Capital Expenditure Growth (%)	-35.3	81.4	-144.4	-10.1	-40.0	-117.6
Increment in Personal Emoluments (%)	-1.6	-7.9	-8.2	1.3	-14.2	-7.5
Increment In Wages (%)	-1.37	-7.4	-5.72	-4.52	-18.65	2.58
Increment Retiring Benefits (%)	-24.5	-4.1	0.1	-0.1	-21.7	-1.2
Non-Discretionary/Recurrent Exp. (%)	81.3	84.8	79.1	77.5	80.5	80.2
Non-Discretionary/Total Exp. (%)	56.3	78.2	66.5	64.0	63.5	51.4
Non-Discretionary/ Recurrent Rev (%)	74.1	75.1	75.9	71.5	81.9	87.5
PE & Wages/Recurrent Expenditure	48.0	52.8	52.0	52.9	55.9	55.9
PE & Wages/Recurrent Revenue	44	47	50	49	57	61

Source: The Ministry of Finance, Nevis (Figures are revised)

Table 7.3: Inland Revenue - Taxes collected by tax type in Nevis, 2013 – 2017

Type of Taxes	2013	2014	2015	2016	2017
Bank License	110,000	120,000	108,000	104,000	0
Boat License	0	0	0	0	0
Bus. & Occup License	484,928	486,747	570,839	692,331	683,820.06
Coastal Levy	296,827	499,650	298,185	154,392	199,068.77
Consumption Tax	8,704	7,131	7,821	5,500	6,779.14
Corporate Income Tax	3,124,831	4,203,147	4,100,087	6,703,808	7,634,426.55
Dog License	0	0	0	0	0
Driver License	370,375	354,360	379,069	429,203	457,087.55
Driver Test	0	0	16,250	22,394	45,375
Electricians License	3,088	0	0	0	0
Hotel & Restaurant Tax	0	0	0	0	0
Income Tax	0	0	0	0	0
Insurance Prem. Tax	636,419	392,633	463,260	457,346	485,490.51
IRD fines	125	0	0	0	0
Learner Permit	0	0	0	7,400	45,018.75
License - Unclassified	610,736	645,480	544,473	307,504	7,221.80
Liquor License	53,614	57,341	64,094	72,682	81,239.05
Property Tax	2,426,297	2,561,143	2,720,935	2,770,362	3,219,058.70
Property Tax - Cards	0	0	0	0	0
Radio License	0	0	0	0	0
Social Serv. Levy- No	8,324,117	8,475,642	9,130,008	9,894,682	8,793,452.44
Stamp Duty (Bank Cheq)	15,179	12,964	2,893	6,611	8,190.09
Stamp Duty Probate	0	0	0	0	0
Stamp Duty Unclassified	1,756,907	3,552,936	3,009,556	2,154,952	2,018,677.19
Stamp Duty (Transfer)	10,525,650	12,225,608	13,216,773	9,171,392	6,125,354.30
Temp Driver License	114,188	101,349	88,977	107,147	126,187.50
Temp Liquor License	8,440	4,160	8,620	7,795	820
Tourism Dev. Levy	2,195,351	2,425,729	2,367,022	2,580,226	2,293,474.61
Trader Tax	12,458	4,756	3,261	2,560	0
Travel Tax	285,650	269,441	261,578	241,403	215,833.16
Travel Tax (Unclassified)	968	2,828	2,500	7,250	3,343.75
Unclassified Fees	0	0	129,392	557,317	802,099.75
Unincorp. Business	991,731	1,129,612	1,326,819	1,386,548	1,996,414.62
Value Added Tax	18,375,837	20,221,378	17,718,414	16,528,333	17,118,555.04
Vehicle Rental Levy	0	0	1,600	12,500	0
Wheel Tax	2,008,367	1,960,816	2,191,895	2,454,212	2,652,125.70
Withholding Tax	112,598	327,487	93,832	394,384	329,993.77
<b>Total</b>	<b>52,853,382</b>	<b>60,042,337</b>	<b>58,826,153</b>	<b>57,234,234</b>	<b>55,349,107.80</b>

Source: Nevis Inland Revenue Department

Table 7.4: Revenue collected by the Customs & Excise Department, Nevis 2013- 2017

Revenue Collected	2013	2014	2015	2016	2017
Customs Duty	10,024,739	10,585,564	11,275,035	11,352,726	11,717,460.19
Excise Tax & Duty	5,128,931	3,772,908	4,323,952	5,168,343	5,370,519.19
Value Added Tax	17,444,757	19,168,921	15,515,058	14,812,924	15,563,152.49
Consumption Tax	66,919	35,496	24,954	41,786	46,883.17
Alcohol Duty	106,720	34,134	167,589	100,500	78,750.99
Environmental Levy	711,564	749,128	1,858,935	2,531,385	2,329,710.36
Custom Service Charge	6,391,417	6,235,142	7,361,604	7,951,169	8,130,317.00
Unclassified	8,252	140,865	86,234	62,591	43,639.76
Custom Fees	62,925	64,320	64,550	68,450	80,245
Yacht Fees	11,680	12,900	13,520	14,000	12,980
Fees & Fines	7,500	4,000	26,870	6,000	35,000
Bottle Levy	169,354	0	0	0	58,179.12
Gains on Exchange	0	37	60	62	177.15
<b>Total</b>	<b>40,134,758.00</b>	<b>40,803,415.00</b>	<b>40,718,361.00</b>	<b>42,109,936</b>	<b>43,467,014.42</b>

Table 7.5: Number of New Companies (NBCOs, LLCs, Trusts, Foundations) Registered in Nevis, 2012 - 2017

Years	No. of NBCO's	No. of LLC'S	No. of Trusts	No. of Foundations	Total
2012	1,573	1,110	113	23	2,819
2013	5,181	1,930	474	34	7,619
2014	1,669	868	131	25	2,693
2015	1,365	661	90	27	2,143
2016	1,577	764	117	12	2,470
2017	1,629	650	69	20	2,368

Source: Nevis Financial Services

Table 7.6 Number of Active Entities in Nevis between 2012 and 2017

Years	No. of NBCO's	No. of LLC'S	No. of Trusts	No. of Foundations	Offshore Bank	Total
2012	11,590	4,938	1,022	92	1	17,643
2013	11,628	5,086	877	97	1	17,689
2014	11,928	5,159	1,093	103	1	18,284
2015	11,843	4,970	780	114	1	17,708
2016	11,142	4,420	1,031	97	1	16,691
2017	11,305	4,386	691	93	1	16,476

Table 7.7: Revenue collected Quarterly by the Nevis Financial Services Sector, 2013 - 2017

Month per 1/4	2013	2014	2015	2016	2017
March	3,170,458	3,860,479	3,976,162	4,191,375	4,217,139
June	3,477,351	2,806,234	3,252,282	3,384,745	3,031,965
September	2,637,870	2,834,382	3,139,539	2,922,314	2,746,957
December	3,392,872	3,351,319	3,558,060	3,896,556	3,326,196
<b>Total</b>	<b>12,678,551</b>	<b>12,852,414</b>	<b>13,926,043</b>	<b>14,394,990</b>	<b>13,322,257</b>

## **St. Kitts and Nevis Gross Domestic Product (Basic Current/Constant)**

*Table.7.8: St. Kitts/Nevis Gross Domestic Product by Economic Activity at Basic Current Prices 2013-2017  
(EC\$ mill)*

INDUSTRIES	2013	2014	2015	2016	2017Est
<i>Agriculture</i>	20.12	18.37	16.50	16.61	18.83
<i>Crops</i>	13.61	11.44	9.31	8.90	11.23
<i>Sugar</i>	0.00	0.00	0.00	0.00	0.00
<i>Other crops</i>	13.61	11.44	9.31	8.90	11.23
<i>Livestock</i>	5.93	6.34	6.59	7.10	7.01
<i>Forestry</i>	0.58	0.59	0.59	0.60	0.60
<i>Fishing</i>	7.66	7.79	7.98	6.74	8.40
<i>Mining &amp; Quarrying</i>	3.44	3.60	3.42	2.74	2.26
<i>Manufacturing</i>	168.66	159.94	155.56	144.68	134.77
<i>Sugar</i>	0.00	0.00	0.00	0.00	0.00
<i>Other</i>	168.66	159.94	155.56	144.68	134.77
<i>Electricity &amp; Water</i>	25.38	27.69	30.29	30.02	33.21
<i>Electricity</i>	12.75	16.00	18.52	19.81	22.14
<i>Water</i>	12.63	11.70	11.77	10.21	11.07
<i>Construction</i>	268.53	342.31	383.69	419.18	479.78
<i>Wholesale &amp; Retail Trade</i>	144.39	145.85	154.71	173.20	181.86
<i>Hotels &amp; restaurants</i>	138.77	144.53	148.42	152.05	157.52
<i>Hotels</i>	134.60	140.34	144.19	147.69	152.99
<i>Restaurants</i>	4.17	4.19	4.23	4.36	4.53
<i>Transport, Storage and Communications</i>	230.75	252.01	249.24	256.21	266.78
<i>Transport and Storage</i>	142.44	160.23	155.17	158.24	167.14
<i>Road</i>	90.86	95.17	81.96	86.74	94.53
<i>Sea</i>	0.74	0.78	0.83	0.80	0.85
<i>Air</i>	1.05	0.99	0.98	0.97	0.99
<i>Supporting and auxiliary transportation activities</i>	49.79	63.29	71.40	69.73	70.77
<i>Communications</i>	88.31	91.78	94.07	97.97	99.64
<i>Financial Intermediation</i>	173.89	153.68	150.20	156.92	161.33
<i>Banks &amp; Other Financial Institutions</i>	129.31	107.36	103.55	107.75	110.86
<i>Insurance and pension funding</i>	27.14	27.93	28.16	29.87	30.63
<i>Activities Auxiliary to Financial Intermediation</i>	17.43	18.39	18.49	19.30	19.85
<i>Real Estate, Renting and Business Activities</i>	288.49	299.37	308.71	321.98	319.66
<i>Owner Occupied Dwellings</i>	127.42	129.54	131.47	136.78	134.71
<i>Real estate activities</i>	121.51	129.10	132.20	137.54	135.46
<i>Renting of machinery and equipment</i>	2.64	2.81	3.14	3.21	3.34
<i>Computer and related activities</i>	5.58	4.66	4.71	4.99	5.19
<i>Business Services</i>	31.35	33.28	37.20	39.45	40.97
<i>Public Administration, Defence &amp; Compulsory Social Security</i>	180.65	198.43	211.46	221.13	229.81

<i>Education</i>	90.74	97.19	103.17	108.11	111.51
<i>Public</i>	60.49	63.87	69.34	72.51	73.63
<i>Private</i>	30.25	33.32	33.83	35.60	37.88
<i>Health and Social Work</i>	49.88	53.14	57.83	61.48	65.03
<i>Public</i>	36.92	40.29	43.74	45.74	48.58
<i>Private</i>	12.96	12.85	14.09	15.74	16.45
<i>Other community, social &amp; personal services</i>	43.43	48.60	50.70	52.89	54.84
<i>Activities of Private Households as Employers</i>	6.12	5.53	5.52	6.05	5.79
<b>Less FISIM</b>	<b>28.14</b>	<b>23.75</b>	<b>16.01</b>	<b>16.70</b>	<b>17.01</b>
<i>Gross Value Added at Basic Prices</i>	<i>1,812.76</i>	<i>1,934.28</i>	<i>2,021.39</i>	<i>2,113.30</i>	<i>2214.39</i>
<i>GROWTH RATE</i>	<i>7.65</i>	<i>6.70</i>	<i>4.50</i>	<i>4.55</i>	<i>4.78</i>
<i>Taxes on products</i>	315.29	354.72	345.10	343.31	339.42
<b>Less Subsidies</b>	-	-	-	-	-
<i>GDP at Market Prices</i>	<i>2,128.04</i>	<i>2,289.00</i>	<i>2,366.49</i>	<i>2,456.61</i>	<i>2553.81</i>
<i>GROWTH RATE</i>	7.31	7.56	3.39	3.59	3.96

Table.7.9: St. Kitts and Nevis Gross Domestic Product by Economic Activity at Basic Constant Prices 2013-2017 (EC\$ mill)

<b>INDUSTRIES</b>	<b>2013</b>	<b>2014</b>	<b>2015</b>	<b>2016</b>	<b>2017 Est</b>
<b><i>Agriculture, Livestock and Forestry</i></b>	<b>14.67</b>	<b>13.43</b>	<b>12.31</b>	<b>12.23</b>	<b>13.50</b>
<i>Crops</i>	9.75	8.17	6.84	6.44	8.01
<i>Sugar</i>	0.00	0.00	0.00	0.00	0.00
<i>Other Crops</i>	9.75	8.17	6.84	6.44	8.01
<i>Livestock</i>	4.58	4.92	5.11	5.42	5.13
<i>Forestry</i>	0.35	0.35	0.36	0.36	0.35
<b><i>Fishing</i></b>	<b>6.29</b>	<b>6.49</b>	<b>6.56</b>	<b>5.46</b>	<b>6.73</b>
<b><i>Mining &amp; Quarrying</i></b>	<b>3.42</b>	<b>3.60</b>	<b>3.35</b>	<b>2.65</b>	<b>2.35</b>
<b><i>Manufacturing</i></b>	<b>91.03</b>	<b>84.10</b>	<b>85.56</b>	<b>78.40</b>	<b>73.29</b>
<i>Sugar</i>	0.00	0.00	0.00	0.00	0.00
<i>Other</i>	91.03	84.10	85.56	78.40	73.29
<b><i>Electricity &amp; Water</i></b>	<b>23.73</b>	<b>24.10</b>	<b>24.80</b>	<b>24.35</b>	<b>24.65</b>
<i>Electricity</i>	15.12	15.20	15.83	16.68	16.39
<i>Water</i>	8.61	8.90	8.97	7.66	8.26
<b><i>Construction</i></b>	<b>248.44</b>	<b>285.27</b>	<b>304.50</b>	<b>327.75</b>	<b>357.37</b>
<b><i>Wholesale &amp; Retail Trade</i></b>	<b>108.06</b>	<b>108.44</b>	<b>118.34</b>	<b>130.53</b>	<b>135.03</b>
<b><i>Hotels &amp; Restaurants</i></b>	<b>136.01</b>	<b>142.81</b>	<b>147.86</b>	<b>149.23</b>	<b>150.61</b>
<i>Hotels</i>	133.34	140.04	145.05	146.38	147.73
<i>Restaurants</i>	2.68	2.76	2.81	2.85	2.89
<b><i>Transport, Storage and Communications</i></b>	<b>203.07</b>	<b>215.86</b>	<b>230.43</b>	<b>233.87</b>	<b>233.19</b>
<b><i>Transport and Storage</i></b>	<b>103.31</b>	<b>113.00</b>	<b>126.96</b>	<b>127.70</b>	<b>131.08</b>
<i>Road</i>	63.44	65.78	68.99	71.93	74.20
<i>Sea</i>	1.29	1.35	1.44	1.37	1.45
<i>Air</i>	0.55	0.49	0.42	0.41	0.40
<i>Supporting and auxiliary transport activities</i>	38.03	45.39	56.11	53.99	55.03
<b><i>Communications</i></b>	<b>99.76</b>	<b>102.86</b>	<b>103.47</b>	<b>106.17</b>	<b>102.11</b>
<b><i>Financial Intermediation</i></b>	<b>202.04</b>	<b>213.49</b>	<b>226.12</b>	<b>232.37</b>	<b>235.47</b>
<i>Banks &amp; Other Financial Institutions</i>	156.35	166.91	178.40	182.89	185.34
<i>Insurance and pension funding</i>	23.58	23.40	23.75	24.82	25.14
<i>Activities Auxiliary to Financial Intermediation</i>	22.11	23.18	23.97	24.66	24.99

<b>Real Estates, Renting and Business Activities</b>	<b>269.92</b>	<b>275.98</b>	<b>282.75</b>	<b>290.39</b>	<b>288.41</b>
Owner Occupied Dwellings	120.52	122.37	124.11	127.22	125.56
Real estate activities	114.91	121.93	124.78	127.90	126.23
Renting of machinery and equipment	1.79	1.93	2.80	2.82	2.87
Computer and related activities	6.28	4.66	4.73	4.94	5.11
Business Services	26.42	25.10	26.33	27.52	28.65
<b>Public Administration, Defence and Compulsory Social Security</b>	<b>160.79</b>	<b>169.83</b>	<b>175.71</b>	<b>181.02</b>	<b>186.71</b>
<b>Education</b>	<b>74.62</b>	<b>76.19</b>	<b>79.46</b>	<b>82.01</b>	<b>84.01</b>
Public	53.84	54.66	57.62	59.36	62.52
Private	20.78	21.53	21.85	22.65	21.49
<b>Health and Social Work</b>	<b>43.45</b>	<b>44.89</b>	<b>47.79</b>	<b>50.04</b>	<b>52.42</b>
Public	32.86	34.48	36.34	37.44	39.37
Private	10.59	10.41	11.45	12.60	13.05
<b>Other community, social and personal services</b>	<b>36.34</b>	<b>40.29</b>	<b>43.64</b>	<b>44.84</b>	<b>46.18</b>
<b>Private Households with Employed Persons</b>	<b>5.61</b>	<b>4.71</b>	<b>4.58</b>	<b>4.94</b>	<b>4.71</b>
<b>Less FISIM</b>	<b>36.22</b>	<b>36.77</b>	<b>39.34</b>	<b>40.44</b>	<b>38.80</b>
<b>GDP at Basic Prices, Constant</b>	<b>1,591.29</b>	<b>1,672.70</b>	<b>1,754.41</b>	<b>1,809.65</b>	<b>1,855.83</b>
<b>GROWTH RATE</b>	<b>6.56</b>	<b>5.12</b>	<b>4.88</b>	<b>3.15</b>	<b>2.55</b>
Plus: Product Taxes less Subsidies	276.77	306.75	303.75	293.98	284.46
<b>GDP in Market Prices</b>	<b>1,868.06</b>	<b>1,979.45</b>	<b>2,058.16</b>	<b>2,103.63</b>	<b>2,140.29</b>
Growth Rate	6.22	5.96	3.98	2.21	1.74

Source: St. Kitts Nevis Statistics Department/ECCB



## **E** *ducation*

- ⌘ *General information on pre-schools and nurseries, primary and secondary schools*
- ⌘ *General information on students and teachers – public and/or private*
- ⌘ *CXC subjects passes for secondary school students – public and/or private*
- ⌘ *CAPE Grade distribution at the Charlestown Sixth Form College*
- ⌘ *Enrollment at the Charlestown Sixth Form College*
- ⌘ *General information on Adult Education*
- ⌘ *Gulf Insurance Primary School Championship results*

## Chapter 8

# *Education*

---

**In this section data is given on Pre-schools and Nurseries, Primary Education, Secondary Education, Tertiary Education and Adult and Continuing Education.**

**Education** is defined as the process of facilitating learning, or the acquisition of knowledge, skills, values, beliefs, and habits.

A **preschool**, also known as nursery school, **pre-primary** school, playschool or kindergarten, is an **educational** establishment or **learning** space offering **early childhood education** to children before they begin compulsory **education** at primary school.

Primary Education also called elementary education is for children in kindergarten through sixth grade. Primary Education provides students with a basic understanding in the areas of English, Mathematics, Science, Social Studies and Computer. Primary education provides students with fundamental skills that will be the foundation for the rest of their academic career.

**Secondary schools** may be called **high schools** refers to the last five years of statutory formal education (forms one to five). During Secondary Schools students are required to complete the following subject areas of Mathematics, English and History while having a choice in the other subject areas.

Tertiary Education refers to any type of education perused beyond the high/secondary school levels. Tertiary Education offers certification at a higher level which includes diplomas, undergraduate and graduate certificates, an associate, a bachelors, a master's and doctoral degrees. In Nevis Tertiary Education is offered by the Nevis Six Form College and the University of the West Indies Distance Education Centre. Online courses, certificates and degrees are also available from reputable online Universities and Colleges.

Adult and Continuing Learning includes person who are above school age wishing to gain passes in subject areas offered by the Caribbean Examination Council (CXC). Adult learning options includes online degrees completion, professional advancement and personal enrichment courses.

Table 8.1: General Information on Pre-schools and Nurseries in Nevis, 2012/13 – 2016/2017

Year	2012/13	2013/14	2014/15	2015/16	2016/17
Private Preschool Centers	7	6	6	5	6
Government Preschool Centers	3	4	4	4	4
<b>Total Supervisors for Public &amp; Private Preschools</b>	<b>10</b>	<b>10</b>	<b>10</b>	<b>9</b>	<b>9</b>
<b>Total Auxiliary Staff for Public &amp; Private Preschools</b>	<b>30</b>	<b>29</b>	<b>28</b>	<b>30</b>	<b>27</b>
Supervisors/Auxiliary Staff for Nurseries					
Centre Based	15	15	15	22	22
Home Based	13	13	13	16	15
<b>Total Children in Preschools</b>	<b>352</b>	<b>357</b>	<b>322</b>	<b>357</b>	<b>367</b>
<b>Total Children in Nurseries</b>	<b>136</b>	<b>150</b>	<b>150</b>	<b>174</b>	<b>175</b>
<b>Total Enrollment in Preschools and Nurseries</b>	<b>488</b>	<b>507</b>	<b>472</b>	<b>531</b>	<b>542</b>

Table 8.2: Number of Public and Private Primary Schools in Nevis, 2011/12– 2016/17

	2011/2012	2012/2013	2013/2014	2014/2015	2015-2016	2016-2017
<b>Primary Public and Private School</b>						
<b>Public</b>	7	7	7	7	7	7
<b>Private</b>	3	3	3	3	3	3
<b>Total</b>	<b>10</b>	<b>10</b>	<b>10</b>	<b>10</b>	<b>10</b>	<b>10</b>

Table 8.3: Number of Students and Teachers in Public Primary School, 2012/13 – 2016/17 (Source: Stats, Nevis)

Year	2012-2013		2013-2014		2014-2015		2015-2016		2016-2017	
Gender	Male	Female	Male	Female	Male	Female	Male	Female	Male	Female
<b>Students</b>	575	575	549	552	560	557	528	516	515	494
<b>Teachers</b>	14	100	12	104	10	106	13	109	12	109

Table 8.4: Number of Students and Teachers in Private Primary School, 2012/13 – 2016/17 (Source: Stats, Nevis)

Year	2012-2013		2013-2014		2014-2015		2015-2016		2016-2017	
Gender	Male	Female	Male	Female	Male	Female	Male	Female	Male	Female
<b>Students</b>	56	53	56	59	68	74	77	99	79	95
<b>Teachers</b>	1	16	1	19	1	20	1	21	1	21

NB: Data provided for two of the three schools

*Table 8.5: Number of Public and Private Secondary Schools in Nevis, 2011/12– 2016/17*

	2011/2012	2012/2013	2013/2014	2014/2015	2015/2016	2016/2017
<i>Public</i>	2	2	2	2	2	2
<i>Private</i>	1	1	1	1	1	1
<b>Total</b>	<b>3</b>	<b>3</b>	<b>3</b>	<b>3</b>	<b>3</b>	<b>3</b>

*Source: Department of Education*

*Table 8.6: Number of Students and Teachers in Public Secondary School, 2012/13 – 2016/17 (Source: Stats, Nevis)*

Year	2012-2013		2013-2014		2014-2015		2015-2016		2016-2017	
	Male	Female	Male	Female	Male	Female	Male	Female	Male	Female
<i>Students</i>	413	491	513	546	481	520	473	492	442	459
<i>Teachers</i>	42	87	46	99	43	88	40	97	41	99

*Table 8.7: Number of Students and Teachers in Private Secondary School in Nevis, 2011/12 – 2015/16*

Year	2011-2012		2012-2013		2013-2014		2014-2015		2015-2016		2016-2017	
	Male	Female	Male	Female	Male	Female	Male	Female	Male	Female	Male	Female
<i>Students</i>	15	13	15	13	6	6	16	16	16	17	n/a	n/a
<i>Teachers</i>	2	7	2	7	2	7	2	9	2	9	n/a	n/a

*Table 8.8: CSEC Subject passes for Charlestown and Gingerland Secondary Schools, 2010- 2017*

<i>Subject Passes</i>	2010	2011	2012	2013	2014	2015	2016	2017
0 - 2	75	69	57	40	40	24	41	30
3 - 5	54	46	41	54	63	52	45	56
6 - 8	39	47	35	48	53	41	50	50
9+	34	24	29	21	29	29	35	40
<b>Total</b>	<b>202</b>	<b>186</b>	<b>162</b>	<b>163</b>	<b>185</b>	<b>146</b>	<b>171</b>	<b>176</b>

*Source: Department of Education*

*Table 8.9: CAPE Grade Distribution at the Charlestown Sixth Form College in Nevis, 2010 – 2017*

Grade	Number of Students							
	2010	2011	2012	2013	2014	2015	2016	2017
<b>I</b>	20	6	24	38	25	30	32	33
<b>II</b>	59	47	65	56	46	84	63	105
<b>III</b>	113	68	92	79	83	109	122	132
<b>IV</b>	122	125	118	101	95	125	156	103
<b>V</b>	130	150	139	116	102	131	141	100
<b>VI</b>	72	108	88	75	72	90	74	71
<b>VII</b>	20	30	11	13	15	19	24	22
	<b>536</b>	<b>534</b>	<b>537</b>	<b>478</b>	<b>438</b>	<b>588</b>	<b>612</b>	<b>566</b>

NB: Grades 1-V Passing Grades Grades VI-VII Failing Grades

Table 8.10: Enrollment of Students at the Nevis Sixth Form College in Nevis, 2010- 2017

Year	Sixth B		Sixth A		Total	
	Girls	Boys	Girls	Boys	Girls	Boys
2010	61	158	35	17	96	35
2011	51	35	38	11	89	46
2012	40	15	36	28	76	43
2013	49	28	26	10	75	38
2014	59	34	30	22	89	56
2015	50	26	37	29	87	55
2016	44	21	38	26	82	47
2017	48	25	34	18	82	43

Table 8.11: Final scores for Primary School Athletic Championship in Nevis, 2010-2017

Gulf Insurance Primary School Championship 2010 - 2017								
Name of School	2010	2011	2012	2013	2014	2015	2016	2017
St. Thomas'	161	164	197	199	145	155	182	191
VOJ Nicholls	54	42	42	50	54	34	18	32
St. James	73	91	57	59	59	50	32	27
Joycelyn Liburd	182	197	170	142	141	178	117	163
Elizabeth Pemberton	82	70	79	81	105.5	139	152	125
Ivor Walters	83	92	86	85	134.5	140	159	158
Charlestown	180	168	183	200	191	134	153	128
Maude Cross Preparatory	49	44	56	50	36	34	51	42

Source: <https://sites.google.com/site/nevispsc/home-2014>

Table 8.12: *Adult Education classes at the Education Department, Nevis 2012-2016*

<i>Year</i>	<i>Subject</i>	<i>Males</i>	<i>Females</i>	<i>Total</i>
2012	Mathematics	2	8	10
	Clothing & Textiles	0	15	15
<b>Total</b>		<b>2</b>	<b>23</b>	<b>25</b>
2013	Mathematics	1	4	5
	Clothing & Textiles	0	7	7
	Agriculture Science	0	5	5
	EDPM	1	6	6
<b>Total</b>		<b>2</b>	<b>22</b>	<b>24</b>
2014	Mathematics	0	5	5
	Clothing & Textiles	0	7	7
	Social Studies	0	0	0
	Agriculture Science	2	3	5
	Motor Mechanics	0	6	6
	Economics (CAPE)	2	3	5
	EDPM	1	4	5
<b>Total</b>		<b>5</b>	<b>16</b>	<b>21</b>
2015	Mathematics	1	5	6
	Sewing for beginners	0	7	7
	Social Studies	1	3	4
	EDPM	1	5	6
	Information Technology	2	3	5
	Economics	3	3	6
<b>Total</b>		<b>8</b>	<b>26</b>	<b>34</b>
2016	Mathematics	0	8	8
	Agriculture Science	1	1	2
	Social Studies	0	2	2
	Economics	1	1	2
	Human Social Biology	0	4	4
	Sewing for beginners	0	6	6
	Motor Mechanics	4	1	5
<b>Total</b>		<b>6</b>	<b>23</b>	<b>29</b>

Source: Department of Education



## **E** *mployment*

- ⌘ *Working age population*
- ⌘ *Unemployment rate*
- ⌘ *Employees by selected industries and services*
- ⌘ *Work permit application by sector*
- ⌘ *Work permit application by nationality*

## Chapter 9

# Employment

Covered under this heading is data on employment which includes the working age population by Sex and Parish, Unemployment and Unemployment Rate by Sex and Parish, Average Employment by Selected Industries, Work Permit Application by Sectors, and Work Permit Application by Nationality.

Labour, but particularly income and employment indicators are critical in analyzing economic and social progress at both the macro and the micro levels. Without these, no meaningful assessment of development performance is complete. Therefore, it is critical for each country to have timely information on labour and income aspects of the development process.

Labour Force comprises people ages 15 and older who supply labor for the production of goods and services during a specified period. It includes both the employed and the unemployed. In general the labor force includes the unemployed, and first-time job-seekers, but excludes homemakers and other unpaid caregivers and workers in the informal sector.

Over the years the Labour Force has changed with an aging population and the influx of other nationalities. With the introduction of Free Movement under the Revised Treaty of Chaguaramas provides for the free movement of non-wage earners, either as service providers and/or to establish businesses, including managerial, supervisory and technical staff, and their spouses and immediate family members. This has led to an increase in the Labour Force on Nevis.

*Table 9. 1: Working-age population by Sex and Parish*

<i>Parish</i>	<i>Male</i>	<i>Female</i>	<i>Both Sexes</i>
<i>St. Paul</i>	518	586	1,104
<i>St. John</i>	1,269	1,347	2,616
<i>St. George</i>	978	978	1,956
<i>St. Thomas</i>	766	649	1,415
<i>St. James</i>	762	771	1,533
	<b>4,293</b>	<b>4,331</b>	<b>8,624</b>

*Table 9. 2: Unemployment and Unemployment Rate by Sex and Parish*

<i>Parish</i>	<i>Male</i>		<i>Female</i>		<i>Both Sexes</i>	
	<i>Unemployment population</i>	<i>Unemployment rate (%)</i>	<i>Unemployment population</i>	<i>Unemployment rate (%)</i>	<i>Unemployment population</i>	<i>Unemployment rate (%)</i>
<i>St. Paul</i>	27	6.5	27	6.3	67	6.3
<i>St. John</i>	29	3.0	20	1.8	54	2.4
<i>St. George</i>	24	2.9	47	6	80	4.4
<i>St. Thomas</i>	21	3.5	0	0	25	1.9
<i>St. James</i>	48	8.3	29	4.9	90	6.6
<i>Nevis</i>	149	4.4	123	3.6	276	4.0

*Table 9. 3: Average Employees by Selected Industries and Services 2010-2017 (\*\*)*

<b>Industries and Services</b>	<b>2010</b>	<b>2011</b>	<b>2012</b>	<b>2013</b>	<b>2014</b>	<b>2015</b>	<b>2016</b>	<b>2017</b>
Agriculture	60	55	71	79	109	49	126	105
Baking	37	36	28	27	23	22	30	27
Civil Service	755	785	811	827	834	861	876	896
Commercial	358	370	390	398	370	338	344	352
Construction	465	413	376	450	541	393	528	488
Domestic	162	140	163	146	156	132	136	132
Financial	277	246	206	227	232	213	222	231
Hotel & Guest Houses	613	1,028	1,069	1,057	1,090	1,079	1,108	1,142
Manufacturing	72	67	60	46	49	41	46	44
NE Workers	650	361	720	761	776	755	899	907
Restaurants	129	145	135	127	153	165	230	173
Services	372	476	484	257	535	571	610	277
Statutory Corporations	273	280	260	497	268	276	298	588
Telecommunications	60	167	55	28	40	46	48	55
Transportation	72	62	54	68	52	50	69	65
<b>Total</b>	<b>4,355</b>	<b>4,631</b>	<b>4,882</b>	<b>4,995</b>	<b>5,228</b>	<b>4,991</b>	<b>5,570</b>	<b>5,482</b>

(\*\* figures round up)

Source: Labour Department, Nevis

*Table 9.4: Work Permit application by Sectors, 2010-2017*

<b>Sector</b>	<b>2010</b>	<b>2011</b>	<b>2012</b>	<b>2013</b>	<b>2014</b>	<b>2015</b>	<b>2016</b>	<b>2017</b>
Agriculture	76	81	63	61	47	47	36	43
Baking	10	11	7	5	5	5	1	6
Nevis Island Administration	148	133	90	69	67	65	30	36
Domestic	44	34	33	30	12	4	4	8
Construction	301	184	130	87	58	116	98	85
Commercial	121	53	38	31	21	25	27	26
Financial	12	8	7	10	10	8	8	8
Hotel and Guest Houses	74	101	81	96	71	65	59	82
Manufacturing	41	34	27	7	14	6	10	17
Restaurants	57	56	53	53	47	45	53	63
Services	204	177	158	171	148	157	159	150
Statutory Corporation	18	11	9	9	6	5	1	7
Telecommunication	2	0	0	0	0	0	3	1
Transportation	4	12	10	9	12	2	1	1
<b>Total</b>	<b>1,112</b>	<b>895</b>	<b>706</b>	<b>638</b>	<b>518</b>	<b>550</b>	<b>490</b>	<b>533</b>

Source: Department of Labour

Table 9.5: Work Permit application by sector and by sex in Nevis, 2012 - 2017

Sector	2012		2013		2014		2015		2016		2017	
	M	F	M	F	M	F	M	F	M	F	M	F
Agriculture	54	9	48	13	39	8	29	18	21	15	30	13
Baking	5	2	3	2	3	2	2	3	0	1	0	6
Domestic	2	31	4	26	2	10	0	4	0	4	0	8
Construction	123	7	85	2	14	7	115	1	93	5	79	6
Commercial	19	19	16	15	56	2	9	16	15	12	9	17
Financial	6	1	5	5	6	4	6	2	7	1	6	2
Hotel & Guest Houses	59	22	76	20	58	13	55	10	50	9	69	13
Manufacturing	22	5	5	2	13	1	4	2	7	3	8	9
Miscellaneous	0	0	0	0	0	0	0	0	0	0	0	0
Nevis Island Administration	44	46	43	26	37	30	27	38	17	13	18	18
Restaurant	24	29	19	34	24	23	17	28	28	25	26	37
Services	92	66	96	75	49	99	89	68	80	79	76	74
Statutory Corporation	8	1	7	2	3	3	3	2	1	0	7	0
Telecommunication	0	0	0	0	0	0	0	0	3	0	1	0
Transportation	10	0	9	0	8	4	2	0	1	0	1	0
<b>Total</b>	<b>468</b>	<b>238</b>	<b>416</b>	<b>222</b>	<b>312</b>	<b>206</b>	<b>358</b>	<b>192</b>	<b>323</b>	<b>167</b>	<b>330</b>	<b>203</b>

Table 9.6: Work Permit application by Region/Nationality and by Sex in Nevis, 2013 - 2017

Region/Nationality	Nationality by Sex									
	2013		2014		2015		2016		2017	
	Male	Female	Male	Female	Male	Female	Male	Female	Male	Female
CARICOM/OECS	210	112	113	101	95	82	73	69	105	96
Other Caribbean	20	23	28	25	30	29	63	43	64	49
Canada	11	7	11	5	11	2	8	5	4	0
Americas	6	6	4	2	3	3	7	1	5	0
United States	53	30	27	41	50	16	30	17	23	17
Europe/CIS	14	2	14	4	7	4	12	2	17	3
United Kingdom	14	5	9	2	11	2	10	2	9	0
Africa	11	6	12	2	3	0	7	1	9	2
Asia	60	17	81	15	130	42	100	15	84	28
Pacific	17	14	13	9	18	12	13	12	10	8
<b>Total</b>	<b>416</b>	<b>222</b>	<b>312</b>	<b>206</b>	<b>358</b>	<b>192</b>	<b>323</b>	<b>167</b>	<b>330</b>	<b>203</b>
<b>Combine Total</b>	<b>638</b>		<b>518</b>		<b>550</b>		<b>490</b>		<b>533</b>	



## **A griculture P roduction & T rade**

- ⌘ *Egg production*
- ⌘ *Throughput at Marketing Division*
- ⌘ *Production analysis of targeted crops*
- ⌘ *Animals slaughter*
- ⌘ *Export of sea foods and estimated landings of species of fishes*
- ⌘ *Trade – Value of Imports and Exports*

## Chapter 10

# *Agriculture Production*

Agriculture has always been integral to the economies of the Caribbean and in Nevis this has held true. Agriculture continues to be the backbone industry for human sustainability on Nevis, despite the increase levels of the importation of basic food crops. The Agriculture Industry on Nevis has and continues to provide job opportunities which eventually helps to build strong sustainable local and national economies.

Agriculture is the science or practice of farming, including cultivation of the soil for the growing of crops and the rearing of animals to provide food, other products and marketing of the resulting products.

Agriculture continues to be the key sector which contributes to Nevis' GDP in a given year, thus the Department of Agriculture and its subsidiaries, are the entities which generate such income from harvested crops, marketing, distribution and trading.

Agriculture provides a livelihood for many and contributes to food and nutrition security. There has been a growing interest from tourism-related businesses in Nevis to source locally or regionally produced nutritious food and value-added products. This will increase food security and offer a different dining experience for tourists.

*Table 10.1: Egg Production per quartile, 2010-2017*

<i>Year</i>	<i>Production per 1<sup>st</sup> Quarter</i>	<i>Production per 2<sup>nd</sup> Quarter</i>	<i>Production per 3<sup>rd</sup> Quarter</i>	<i>Production per 4<sup>th</sup> Quarter</i>	<i>Total per Year</i>
2010	23,027	26,845	16,380	26,894	<b>93,146</b>
2011	27,630	25,935	25,760	25,300	<b>104,625</b>
2012	24,570	28,483	29,624	30,937	<b>113,614</b>
2013	27,000	26,756	26,864	21,344	<b>101,964</b>
2014	35,660	35,623	38,770	50,540	<b>160,593</b>
2015	44,013	44,365	26,810	41,985	<b>157,173</b>
2016	43,302	52,506	43,260	34,558	<b>173,626</b>
2017	37,563	34,905	33,555	25,566	<b>131,589</b>

Table 10.2: Throughput (lbs) at the Marketing Division on an annual basis 2013-2017

<b>Produce</b>	<b>2013</b>	<b>2014</b>	<b>2015</b>	<b>2016</b>	<b>2017</b>
Apple	0	0	0	0	18
Arugula	0	0	2	0	0
Apricot	175	0	0	0	0
Avocado	255	60	835	963	244
Basil	155	145	8	20	3
Bora Beans	140	485	217	82	42
Breadfruit	495	525	564	558	490
Broccoli	0	65	0	55	0
Butternut Squash	5,495	9,140	4,117.5	9,425.50	6,871
Cabbage	2,275	400	1,303.5	1,004	228
Cantaloupe	8,680	4,350	1,440	1,993.5	298
Cauliflower	0	0	0	31	0
Carrots	425	725	0	135	0
Cassava	705	785	402	204	122
Celery	0	0	26	4	0
Chile Peppers	0	0	0	5	0
Christophene	355	525	628.5	66	65
Cassava Meal	5	0	0	0	0
Cherry Tomato	105	465	943	175	48
Coconut	735	550	340	240	601
Cucumber	12,700	17,040	14,201.5	14,043.5	9,300
Dasheen	55	185	287	590	56
Dragon Fruit	50	310	0	0	0
Eddoes	5	80	258	191	15
Eggplant	2,145	1,930	2,163	1,358	799
Fat Pork	0	0	3	0	0
Garlic	0	0	3	45	0
Ginger	125	215	150	449	214
Ginip	300	0	14	45	0
Grapefruit	1,890	505	140	414	155
Greens	0	0	0	0	6
Green Banana	2,545	3,510	3,898	3,454	3,042
Green Mango	0	0	12	0	0
Green Papaya	470	600	758	746	503
Guava	75	0	466	394	97
Golden Apple	55	0	172	86	5
Herbs and Thyme	475	225	52	275	134
Hot Peppers	195	25	5	2	15
Honey Dew Melon	5,555	5,390	3,251	6,019.5	2,469.5
Jelly	350	130	269	371	718
Jujubi	0	0	4	0	0
Lemon Grass	45	10	0	0	0
Lettuce	770	515	641	276	110
Limes	520	285	80.5	13	0
Mangoes Improved	1,410	3,410	1,425	1,415	372
Mango Unimproved	0	70	0	0	0
Manciport	0	0	754	431	16
Mint	5	0	8.5	3	0

<i>Musk Melon</i>	0	425	0	2	0
<i>Okra</i>	4,385	1,155	1,176.5	1,088.5	391
<i>Onion</i>	4,955	2,845	14,479	9,463	174
<i>Oranges</i>	40	50	44	252	6
<i>Orange Pepper</i>	0	0	28	791.5	0
<i>Pak-choi</i>	0	0	0	5	12
<i>Papaya Ripe</i>	405	100	1,258.5	1,817	977.5
<i>Passion Fruit</i>	95	200	723	718	18
<i>Pigeon Peas</i>	190	0	0	0	0
<i>Pineapple</i>	4,020	2,415	2,756	665	332
<i>Plantain</i>	2,585	2,200	2,064	1,277	1,505
<i>Plum Tomato</i>	0	0	95	0	0
<i>Pomegranite</i>	0	0	0	109	0
<i>Pomeric</i>	15	0	0	0	0
<i>Pumpkin</i>	10,580	6,730	10,773	12,681	12,648
<i>Purple Pepper</i>	0	30	0	0	0
<i>Purple Potato</i>	0	0	38	211	0
<i>Raddish</i>	0	0	0	2	0
<i>Red Pepper</i>	0	160	975	1,722.5	0
<i>Ripe Banana</i>	8,060	15,610	17,794	16,169	14,338
<i>Ripe Plantain</i>	3,270	4,445	6,671	6,039	3,323
<i>Roma Tomato</i>	0	860	250	0	0
<i>Rosemary</i>	25	0	0	0	0
<i>Seasoning Pepper</i>	1,315	525	877	1,586.5	746
<i>Sea Grapes</i>	55	0	0	0	0
<i>Silk Banana</i>	485	265	852	268	96
<i>Sorrel</i>	0	360	231	167	330
<i>Sour Sop</i>	80	50	1120	444	59
<i>Star Apple</i>	0	195	457	164	0
<i>String Beans</i>	1,900	1,555	25	201	160
<i>Sugar Apple</i>	45	130	0	0	33
<i>Sugar Cane</i>	15	15	55	0	0
<i>Sweet Corn</i>	1,605	235	42	407	0
<i>Sweet Pepper</i>	5,160	2,265	1,356	1,196.5	684
<i>Sweet Potato</i>	16,640	10,590	11,952.5	8,872	8,524
<i>Spinach</i>	125	115	210	304	218
<i>Tania</i>	690	1,660	2,247	2,384	2,196.5
<i>Tangerine</i>	0	0	0	335	0
<i>Tamarind</i>	0	40	0	0	0
<i>Thyme</i>	255	100	16	71	16
<i>Tomatoes</i>	21,715	22,115	29,574.5	23,278.5	13,425
<i>Watermelon</i>	35,310	26,955	32,657.5	24,185.5	14,674.5
<i>Wax Apple</i>	10	35	115	11	12
<i>White Potato</i>	0	330	0	0	42
<i>Yams</i>	350	910	1,357.5	1,472	807
<i>Yellow Pepper</i>	0	60	1,021	0	21
<i>Zucchini</i>	655	70	60	13	0
<b>Total</b>	<b>174,775</b>	<b>158,455</b>	<b>183,193</b>	<b>163,954</b>	<b>102,825</b>

Table 10.3: Top ten targeted Crops (lbs) for the period 2013-2017

<b>Crop</b>	<b>Criteria</b>	<b>2013</b>	<b>2014</b>	<b>2015</b>	<b>2016</b>	<b>2017</b>	<b>Production as a % of Imports 2017</b>
Cabbage	<i>Imports</i>	115,063	135,886	43,200	59,592.97	27,053	18.1
	<i>Produce</i>	1,361	1,750	499	3,651	4,899	
Carrots	<i>Imports</i>	105,259	133,833	63,662	69,646.84	65,827	.47
	<i>Produce</i>	20,729	10,400	1,833	1,106	309	
Cantaloupe/Honeydew	<i>Imports</i>	20,519	114,580	84,240	73,010.23	54,627	66.2
	<i>Produce</i>	3,610	60,050	56,812	34,790	36,151	
Corn	<i>Imports</i>	21,364	31,364	14,764	16,040.84	19,355	22.1
	<i>Produce</i>	3,823	2,920	7,185	363	4,282	
Sweet Peppers	<i>Imports</i>	31,058	41,067	54,203	60,713.34	41,123	31.3
	<i>Produce</i>	8,537	27,020	9,810	13,508	12,882	
Pumpkin	<i>Imports</i>	2,459	0	0	0	0	100
	<i>Produce</i>	27,033	99,680	24,186	32,214	16,347	
Sweet Potato	<i>Imports</i>	0	0	2,345	3,207	31,147	13.2
	<i>Produce</i>	4,818	25,885	12,056	5,770	4,100	
Tomato	<i>Imports</i>	35,076	50,565	26,019	45,835	22,251	296
	<i>Produce</i>	46,406	142,830	73,845	61,348	65,884	
Watermelon	<i>Imports</i>	0	2,760	12,699	14,662.83	11,684	856.8
	<i>Produce</i>	70,239	234,830	113,874	79,605	100,108	
Onion	<i>Imports</i>	127,076	204,009	76,940	90,569	78,508	52.6
	<i>Produce</i>	12,133	52,258	30,608	58,286	41,277	

Table 10.4: Accumulative total of acreage farmed and estimated yield 2013-2017

<b>Institution</b>	<b>Criteria</b>	<b>2013</b>	<b>2014</b>	<b>2015</b>	<b>2016</b>	<b>2017</b>
Farmers	Acres	52.44	74.41	73.25	59.10	59.04
	Yield (kg)	566,184	738,879	832,845	300,169.26	293,113.39
Government	Acres	22.4	65.57	37.02	23.6	25
	Yield (kg)	74,460	297,424	218,243	84,005.31	126,089.82
Total	Acres	<b>74.84</b>	<b>739.98</b>	<b>110.27</b>	<b>82.70</b>	<b>84.04</b>
	Yield (kg)	<b>640,644</b>	<b>1,036,303</b>	<b>1,051,088</b>	<b>384,174.57</b>	<b>419,203.21</b>

*Table 10.5: Production Analysis for 2013 of Targeted Crops (Kgs)*

Crops	Estimated production 1 <sup>st</sup> quarter	Estimated production 2 <sup>nd</sup> quarter	Estimated production 3 <sup>rd</sup> quarter	Estimated Production 4 <sup>th</sup> Quarter	Total Estimated Production
Cabbage	1043	227	0	91	1,361
Cantaloupe/Honey Dew	7665	6759	3175	3130	20,729
Carrot	272	363	907	2068	3,610
Corn	1161	2608	54	0	3,823
Onion	3515	2722	2948	0	9,185
Pumpkin	6169	7257	5987	7620	27,033
Sweet pepper	4264	1724	1415	1134	8,537
Sweet potato	3774	499	318	227	4,818
Tomato	29,143	1134	4223	11,906	46,406
Watermelon	17,373	22,453	28,372	2041	70,239
<b>Total</b>	<b>74,379</b>	<b>45,746</b>	<b>47,399</b>	<b>28,217</b>	<b>195,741</b>

*Table 10.6: Production Analysis for 2014 of Targeted Crops (Kgs)*

Crops	Estimated production 1 <sup>st</sup> quarter	Estimated production 2 <sup>nd</sup> quarter	Estimated production 3 <sup>rd</sup> quarter	Estimated Production 4 <sup>th</sup> Quarter	Total Estimated Production
Cabbage	150	0	1,000	600	1,750
Cantaloupe/Honey Dew	18,300	3,500	24,800	13,450	60,050
Carrot	2,660	1,500	5,840	400	10,400
Corn	770	1,700	450	0	2,920
Onion	5,000	39,258	0	8,000	52,258
Pumpkin	53,920	33,520	10,560	1,680	99,680
Sweet pepper	5,100	7,520	11,000	3,400	27,020
Sweet potato	1,685	2,200	9,200	12,800	25,885
Tomato	55,500	23,580	16,500	47,250	142,830
Watermelon	75,250	74,830	46,300	38,450	234,830
<b>Total</b>	<b>218,335</b>	<b>187,608</b>	<b>125,650</b>	<b>126,030</b>	<b>657,623</b>

*Table 10.7: Production Analysis for 2015 of Targeted Crops (Kgs)*

Crops	Estimated production 1 <sup>st</sup> quarter	Estimated production 2 <sup>nd</sup> quarter	Estimated production 3 <sup>rd</sup> quarter	Estimated Production 4 <sup>th</sup> Quarter	Total Estimated Production
Cabbage	1,100	0	0	0	1,100
Cantaloupe/Honey Dew	36,600	40,100	13,550	35,100	125,350
Carrot	1,600	300	0	2,140	4,040
Corn	1,200	440	0	14,200	15,840
Onion	480	0	7,500	59,500	67,480
Pumpkin	5,280	4,600	16,040	27,400	53,320
Sweet pepper	9,900	6,700	1,225	3,800	21,625
Sweet potato	4,200	5,000	9,300	8,080	26,580
Tomato	41,500	81,333	8,250	31,750	162,833
Watermelon	75,700	62,200	65,650	47,500	251,050
<b>Total</b>	<b>177,560</b>	<b>200,673</b>	<b>121,515</b>	<b>229,470</b>	<b>729,218</b>

*Table 10.8: Production Analysis for 2016 of Targeted Crops (Kgs)*

Crops	Estimated production 1 <sup>st</sup> quarter	Estimated production 2 <sup>nd</sup> quarter	Estimated production 3 <sup>rd</sup> quarter	Estimated Production 4 <sup>th</sup> Quarter	Total Estimated Production
Cabbage	6,650	0	900	500	8,050
Cantaloupe/Honey Dew	27,000	27,600	16,100	6,000	76,700
Carrot	0	0	1,400	1,040	2,440
Corn	280	0	400	120	800
Onion	0	0	2,000	98,500	100,500
Pumpkin	23,600	13,100	8,800	25,520	71,020
Sweet pepper	16,000	4,080	4,400	5,300	29,780
Sweet potato	2,080	800	240	9,000	12,120
Tomato	17,500	49,250	39,250	29,250	135,250
Watermelon	28,950	76,150	41,400	29,000	175,500
<b>Total</b>	<b>122,060</b>	<b>170,980</b>	<b>114,890</b>	<b>204,230</b>	<b>612,160</b>

*Table 10.9: Production Analysis for 2017 of Targeted Crops (Kgs)*

Crops	Estimated production 1 <sup>st</sup> quarter	Estimated production 2 <sup>nd</sup> quarter	Estimated production 3 <sup>rd</sup> quarter	Estimated Production 4 <sup>th</sup> Quarter	Total Estimated Production
Cabbage	4,800	0	0	6,000	10,800
Cantaloupe/Honey Dew	19,350	19,300	22,950	18,100	79,700
Carrot	200	0	0	480	680
Corn	5,240	400	3,000	800	9,440
Onion	4,000	0	24,000	63,000	91,000
Pumpkin	4,640	600	8,640	22,160	36,040
Sweet pepper	5,800	6,300	2,300	8,000	22,400
Sweet potato	1,520	0	3,800	3,720	9,040
Tomato	35,750	43,250	36,250	30,000	145,250
Watermelon	88,000	54,500	38,200	40,000	220,700
<b>Total</b>	<b>169,300</b>	<b>124,350</b>	<b>139,140</b>	<b>192,260</b>	<b>625,050</b>

*Table 10.10: Production of popular animals slaughter annually, 2010-2017*

Animals	2010	2011	2012	2013	2014	2015	2016	2017
Steers	7	0	2	2	0	2	3	0
Heifers	20	34	31	17	26	38	27	25
Cows	83	74	96	48	67	38	37	26
Bulls	133	117	75	96	82	77	68	78
Sheep	1,300	1,144	1,090	1,253	1,398	1,461	1,598	1,763
Goats	617	623	532	520	553	573	597	731
Pigs	1,433	1,052	856	1,208	1,578	1,908	1,977	1912
<b>Yearly overall total</b>	<b>3,593</b>	<b>3,044</b>	<b>2,682</b>	<b>3,144</b>	<b>3,704</b>	<b>4,097</b>	<b>4,307</b>	<b>4,535</b>

Table 10.11: Export of Seafood per pound on a yearly basis, 2010-2017

Year	Lobster	Conch	Crab	Conch Shell	Total
2010	2,378	140,356	0	0	142,734
2011	139	291,408	3,167	33	294,747
2012	214	110,111	1,275	14	111,614
2013	235	331,881	2,803	38	334,957
2014	3,542	122,839	4,485	340	131,206
2015	1,288	972,593	5,535	205	979,621
2016	160	109,855	2,730	52	112,797
2017	436	85,128	1,011	44	86,619

Table 10.12: Estimated Landings of species of fishes (lbs) during the period 2013-2017

Species	2013	2014	2015	2016	2017
Snapper	7,270	19,221	29,060	30,619	23,604
Grouper	223	692	965	997	579
Old Wife	208	1,016	3,140	2,020	1,203
Conch	81,403	98,017	78,071	110,597	60,439
Lobster	5,799	12,046	12,682	14,458	7,853
Gar	1,401	4,621	5,824	11,870	3,568
Ballyhoo	2,000	4,716	13,992	17,561	13,449
Jacks	236	4,915	5,427	1,137	1,972
Dolphin	6,636	12,046	38,160	14,319	27,692
Wahoo	3,255	5,282	9,747	6,909	9,284
Kingfish	131	90	65	56	158
Skip Jack	91	1,801	1,541	3,178	3,227
Lion Fish	19	393	221	225	55
Tuna	2,308	1,140	808	535	2,396
Bonito	0	0	0	0	280
Mackerel	42	145	28	2	0
Mah Mahi	0	0	0	18,129	0
Mullet	0	0	0	0	0
Marlin	1,474	350	1,785	392	1,565
Shark	250	268	502	415	1,239
Barracuda	365	822	508	541	468
Shell Fish	384	1,988	1,674	1,644	1,394
Crab	23	52	0	0	0
Mixed Fish	54,306	93,737	64,190	48,194	31,453
Tarpon	0	0	12	0	80
Squid	0	0	0	0	0
Turtle	350	1,985	2,710	133	535
Blue Runner	0	0	1,220	1,542	3,761
Congo Eel	162	157	0	20	0
Sword Fish	0	0	298	0	80
Sail Fish	0	0	36	312	75
<b>Total in (lbs)</b>	<b>168,336</b>	<b>265,500</b>	<b>272,666</b>	<b>285,805</b>	<b>196,409</b>
<b>Value in (EC\$)</b>	<b>1,598,045</b>	<b>2,564,223</b>	<b>2,778,336</b>	<b>3,050,529</b>	<b>2,119,464</b>

Source: Fisheries Department, Nevis

*Table 10:13: Monthly Rainfall Data (mm) 2010-2017*

<i>Month</i>	<i>2010</i>	<i>2011</i>	<i>2012</i>	<i>2013</i>	<i>2014</i>	<i>2015</i>	<i>2016</i>	<i>2017</i>
<i>January</i>	37.8	28.5	76	28.6	49.3	34.5	48	74.1
<i>February</i>	2.7	27.4	31	18	22.7	24.5	29.3	14.6
<i>March</i>	27.1	50.2	48.9	44.2	13.1	23.9	43.8	49.2
<i>April</i>	174.3	22.2	27.7	89.2	36.5	51.4	97.4	100.4
<i>May</i>	117.2	215.9	143.7	335	75.1	6.3	40.6	160.1
<i>June</i>	205.3	45.6	18.1	84.5	65.8	22.7	47.7	115.2
<i>July</i>	256.2	237.6	149.7	53.1	16.6	55.6	136.3	44.7
<i>August</i>	221.2	200.9	47.5	105.5	70.1	97.0	128.0	83.5
<i>September</i>	137.9	278.5	56.5	87.6	75.0	53.3	80.8	378.8
<i>October</i>	427.7	61.6	350.9	65.6	48.4	160.0	129.5	164.4
<i>November</i>	59.4	285.2	30.7	66.8	182.4	96.4	147.3	47.2
<i>December</i>	59.4	232.6	60.1	136.2	117.3	46.7	77.0	120.7

# Trade

Trade involves the commercial transaction involving the sale and purchase of good, service or information. In its simplest form trade is the exchange of one thing for another within boarders or across borders and is vital to the success of civilization. Trade involves but is not limited to goods, clothing, electronics, building materials and cars.

A country's exports are goods and services that it produces and sold to other countries. A country's imports are goods and services that is brought from other countries. All countries export and import goods and services, and all countries benefit from it. By exporting, a country gains income. By importing, it can obtain products that it does not have within its borders.

Exports and imports are important for the development and growth of national economies because not all countries have the resources and skills required to produce certain goods and services. Nevertheless, countries impose trade barriers, such as tariffs and import quotas, in order to protect their domestic industries.

An import in the receiving country is an export from the sending country. Importation and exportation are the defining financial transactions of international trade. In international trade, the importation and exportation of goods are limited by import quotas and mandates from the customs department.

*Table 4.11: Total value of imports, Nevis 2010 – 2017 (Source: Customs Department, Nevis)*

<i>Year</i>	<i>Total</i>	<i>Cumulative Total</i>
2010	\$108,769,818.90	\$108,769,818.90
2011	\$121,950,706.60	\$230,720,525.50
2012	\$112,038,761.00	\$342,759,286.50
2013	\$120,675,322.70	\$463,434,609.20
2014	\$142,556,590.19	\$605,991,199.39
2015	\$128,533,323.45	\$734,524,522.84
2016	\$157,018,239.15	\$891,542,761.99
2017	\$183,805,063.60	\$1,075,347,825.59

*Table 4.12: Total value of exports, Nevis 2013 – 2017 (Source: Customs Department, Nevis)*

<i>Year</i>	<i>Total</i>	<i>Cumulative Total</i>
2013	\$850,281.86	\$850,281.86
2014	\$1,259,125.50	\$2,109,407.36
2015	\$725,908.23	\$2,835,315.39
2016	\$473,732.18	\$3,309,047.77
2017	\$687,469.95	\$3,996,517.72



## **C riminal O ffences & F ire C alls**

- ⌘ *Criminal Offences recorded at Divisional "C", RSCNPF*
- ⌘ *Number of fire calls by category, Fire & Rescue Service*

## Chapter 11

# Crime Offences & Fire Calls

**Crime** is any illegal activity that is prohibited by the law. A **crime** is often called an 'offence'. Thus a **crime** is any act or omission that violates a law which results in a punishment. Punishments can range from the payment of a fine to incarceration in jail. The level of the offense or **crime** will usually be set in proportion to the severity of the **crime**. Robbing someone at gun point is a severe crime that can result in a lengthy prison sentence while driving while using a cell phone is a less severe crime that may result in the issuing of a ticket or a fee.

Crime prevention is the attempt to reduce and deter crime and criminals. It is applied specifically to efforts made by governments and police to reduce crime, enforce the law, and maintain criminal justice.

The impact of crime on the people affected by it can be profound. Victims may suffer from physical, mental, emotional and financial harm, from which some may never recover. Injuries may be threatened or inflicted upon victims, witnesses or their families, and threats may even be made against lives. The cooperation of victims and witnesses is crucial to achieving successful prosecutions of criminal offenders and dismantling organized criminal groups. Victims who receive appropriate and adequate care and support are more likely to cooperate with the criminal justice system in bringing perpetrators of crime to justice.

*Table 11.1 Criminal data recorded between the periods 2010 to 2017*

<i>Crime Category</i>	<b>2010</b>	<b>2011</b>	<b>2012</b>	<b>2013</b>	<b>2014</b>	<b>2015</b>	<b>2016</b>	<b>2017</b>
<i>Murder</i>	5	6	3	10	5	8	5	9
<i>Attempted Murder</i>	3	0	0	1	2	0	2	6
<i>Manslaughter</i>	1	0	0	0	0	0	0	0
<i>Wounding</i>	15	17	7	19	9	8	14	3
<i>Grievous Bodily Harm (Inflicting/Causing)</i>	2	0	1	2	0	0	0	1
<i>Wounding with intent (Other)</i>	15	-	0	0	0	0	0	2
<i>Wounding with intent (Firearm)</i>	6	7	2	5	7	7	5	2
<i>Rape</i>	1	1	5	3	1	1	6	2
<i>Unlawful Carnal knowledge</i>	3	3	1	9	1	2	2	0
<i>Defilement/Incest</i>	0	2	0	0	0	0	0	0
<i>Uttering of forged documents</i>	0	2	0	3	0	3	0	0
<i>Indecent Assault on Females</i>	3	5	2	1	0	2	1	2
<i>Assault with Intent to Rob</i>	1	0	3	3	0	1	4	2
<i>Robbery/Armed Robbery</i>	13	18	23	18	29	14	11	8
<i>House Breaking and Larceny (Residential)</i>	-	-	70	91	43	32	23	32
<i>House Breaking and Larceny (Commercial)</i>	10	0	33	30	19	16	12	13
<i>Housebreaking and Larceny (Other)</i>	63	64	10	4	0	0	1	3
<i>House Breaking with Intent (Residential)</i>	14	0	17	10	10	4	4	6
<i>House Breaking with Intent (Commercial)</i>	21	36	2	3	3	3	0	3
<i>House Breaking with Intent (Other)</i>	0	13	0	0	0	0	0	0
<i>Break &amp; Enter Divine Place of Worship with intent to commit Felon</i>	0	0	0	0	0	0	0	0

<i>Burglary</i>	48	14	21	34	10	6	10	1
<i>Sacrilege</i>	0	0	0	2	1	1	1	0
<i>Shooting with Intent</i>	4	2	0	1	2	3	7	1
<i>Larceny</i>	36	58	45	50	42	29	32	29
<i>Unlawful Possession</i>	0	1	0	1	0	0	0	0
<i>Receiving Stolen Goods</i>	0	0	4	1	2	0	0	1
<i>Obtaining Credit by Fraud</i>	0	0	1	0	0	0	0	0
<i>Causing death by Careless/Reckless or Dangerous Driving</i>	0	1	0	0	0	0	0	0
<i>Arson</i>	0	2	0	2	2	0	1	0
<i>Possession of Controlled Drugs</i>	53	86	70	43	36	29	29	28
<i>Possession with Intent to Supply</i>	13	5	9	18	11	6	5	5
<i>Importing Controlled Drugs</i>	0	4	0	0	0	0	0	1
<i>Cultivating of Controlled Drugs</i>	6	4	3	5	3	2	1	0
<i>Unlawful Possession of Firearms/Explosives</i>	5	0	3	4	3	0	2	0
<i>Unlawful Possession of Ammunition</i>	6	0	5	5	3	1	2	4
<i>Smuggling of Ammunition</i>	0	0	0	0	0	0	0	1
<i>Smuggling of Firearm</i>	0	0	0	0	3	0	1	3
<i>Fraudulent Conversion</i>	0	0	3	2	0	1	1	0
<i>False Pretenses</i>	0	0	0	0	7	0	0	0
<i>Embezzlement/Breach of Trust</i>	0	0	0	0	1	0	0	0
<i>Malicious Damage</i>	0	31	18	12	30	6	18	14
<i>Possession of Firearm with intent to endanger life</i>	0	0	2	0	0	0	0	3
<i>Other crime, danger to life or bodily harm</i>	0	0	3	0	0	0	0	3
<i>Abduction/Kidnapping</i>	0	0	0	0	0	1	0	0
<i>Indecent Assault on Males</i>	0	0	0	0	0	1	0	1
<i>Unnatural Offences (Buggery/Beastiality)</i>	0	0	0	0	0	0	0	1
<i>Found in enclosed premises</i>	0	0	0	0	0	0	1	0
<i>Forgery</i>	0	0	0	0	0	0	1	1
<b>Total</b>	<b>347</b>	<b>382</b>	<b>368</b>	<b>392</b>	<b>285</b>	<b>187</b>	<b>202</b>	<b>192</b>

Source: Royal St. Christopher & Nevis Police Force, Division "C"

## Fire and Rescue Service

*Table 11.2: Number of Fires by Category broken down by fire call in Nevis, 2013*

Class- A		Class- B		Class- C		False	Motor Vehicle Accident	Motor Vehicle Fire	Motorcycle
<b>House</b>	9	<b>Kitchen</b>	2	<b>Electrical</b>	3	20	3	4	<b>0</b>
<b>Grass/Bush</b>	47	<b>Propane</b>	1						
<b>Tool Shed</b>	4								
<b>Garbage</b>	50								
<b>Tyres</b>	2								
<b>Copper</b>	0								
<b>Other</b>	0								
<b>Total</b>	112		3		3	20	3	4	0

*Source: Fire & Rescue Service, Nevis*

*Table 11.3: Number of Fires by Category broken down by fire call in Nevis, 2014*

Class- A		Class- B		Class- C		False	Motor Vehicle Accident	Motor Vehicle Fire	Motorcycle
<b>House</b>	8	<b>Kitchen</b>	0	<b>Electrical</b>	7	23	2	0	0
<b>Grass/Bush</b>	45	<b>Propane</b>	0						
<b>Tool Shed</b>	1								
<b>Garbage</b>	51								
<b>Lamp Pole</b>	4								
<b>Gov. Building</b>	1								
<b>Vehicle</b>	1								
<b>Smoke Disturbance</b>	1								
<b>Total</b>	112		0		7	23	2	0	0

*Source: Fire & Rescue Service, Nevis*

*Table 11.4: Number of Fires by Category broken down by fire call in Nevis, 2015*

Class- A		Class- B		Class- C		False	Motor Vehicle Accident	Motor Vehicle Fire	Motorcycle
<b>House</b>	10	<b>Kitchen</b>	0	<b>Electrical</b>	7	13	0	0	0
<b>Grass/Bush</b>	33	<b>Propane</b>	0						
<b>Tool Shed</b>	0								
<b>Garbage</b>	53								
<b>Lamp Pole</b>	4								
<b>Container</b>	1								
<b>Vehicle</b>	4								
<b>Smoke Disturbance</b>	0								
<b>Total</b>	105		0		7	13	0	0	0

*Source: Fire & Rescue Service, Nevis*

*Table 11.5: Number of Fires by Category broken down by fire call in Nevis, 2016*

Class- A		Class- B		Class- C		False	Motor Vehicle Accident	Motor Vehicle Fire	Motorcycle
<i>House</i>	10	<i>Kitchen</i>	0	<i>Electrical</i>	7	11	0	0	0
<i>Grass/Bush</i>	10	<i>Propane</i>	1						
<i>Tool Shed</i>	0								
<i>Garbage</i>	52								
<i>Lamp Pole</i>	0								
<i>Container</i>	0								
<i>Vehicle</i>	3								
<i>Smoke Disturbance</i>	0								
<b>Total</b>	75		1		7	11	0	0	0

*Source: Fire & Rescue Service, Nevis*

*Table 11.6: Number of Fires by Category broken down by fire call in Nevis, 2017*

Class- A		Class- B		Class- C		False	Motor Vehicle Accident	Motor Vehicle Fire	Motorcycle
<i>House</i>	10	<i>Kitchen</i>	0	<i>Electrical</i>	6	10	2	3	0
<i>Grass/Bush</i>	10	<i>Propane</i>	0						
<i>Tool Shed</i>	0	<i>Gas Leak</i>	1						
<i>Garbage</i>	46								
<i>Lamp Pole</i>	5								
<i>Container</i>	0								
<i>Vehicle</i>	2								
<i>Smoke Disturbance</i>	0								
<b>Total</b>	73		1		6	10	2	3	0

*Source: Fire & Rescue Service, Nevis*